

COMPANY PROFILE

PROFILE

DROMOS Consulting is one of the leading independent consulting organisations in Greece providing expertise in the areas of Development, Planning, Engineering and Project Management.

Established in 1980, currently employs high caliber staff with experience in a wide range of services covering the areas of Transportation Planning, Systems Design and Operation, Civil and Structural engineering, Traffic Management and Engineering, Environmental Impact Assessments, Project and Construction Management, Feasibility studies and Project Evaluation, Real Estate and Urban Development Studies, Surveying and Mapping, G.I.S., Digital Orthophotomapping, Photogrammetry and Remote Sensing Applications.

A complete list of associated experts in the whole range of supporting disciplines complements the capacity of the consulting group, providing comprehensive and high quality professional services.

Latest technology systems and software packages, coupled with application of state-of-the art methods to solve complex planning and engineering problems within a top quality working environment provided at the recently constructed self-owned premises, secure the optimum conditions for high quality and timely delivery of complex multidisciplinary projects.

The organisation has long experience in strategic plans for the development of nation-wide transportation infrastructure and has developed its own transport models, calibrated to the local conditions, for travel forecasting and evaluation of transport priorities at both the urban and the regional level. It has gained vast experience in engineering design of transport facilities having participated in most of the principal Hellenic projects of the last two decades. It has also considerable experience in operational and management issues of transport systems, as well as in tolling strategies.

DROMOS Consulting group of companies provides quality professional services in a creative, innovative and cost efficient manner to meet the clients' needs. The consulting services offered are responsive to the challenges set and give value for money in both the short and the long run. Working closely with its clients secures comprehension of each project particular needs. The unique experience, the professional skills and the knowledge coupled with the utmost rigour and the close collaboration within multidisciplinary working teams, features the quality of services offered and justifies the leading position of the organisation and its high international reputation.

The European Commission, International Funding Organisations, Banking Institutions, State and Local Governments, major contracting consortia, multinational companies, real estate developers and public or private bodies related to the Transport Sector are among the clients of DROMOS Consulting.



DROMOS Consulting premises

CONSULTING SERVICES



Regeneration of Piraeus waterfront, Greece

Development Strategy, Transportation Planning, Feasibility Studies, Project Evaluation / Management

- Strategic Transport Planning at national / regional scale
- Urban Development and Urban Regeneration
- Urban Transportation Planning
- Public Transport Systems Planning
- Town Planning and Transport Policy
- Traffic and Transport Planning of Major Development Projects
- Transport Systems Operation and Management
- Location Studies and Accessibility Analysis
- Feasibility Studies for Transport Infrastructure Projects
- Project Evaluation
- Monitoring and Management of Development Programs
- Operating Cost Analysis and Pricing Policy



Metamorphosi interchange, Greece

Highway and Junction Design

- Freeways, Urban Arterials and Streets
- Intercity Motorways and Rural Highways
- Design of Grade-separated Interchanges and At-grade Intersections
- Toll System Design and Roadside Facilities
- Drainage and Flood Protection of Transport Facilities
- Highway Upgrading Studies
- Road Pavement Design
- Highway Lighting Design
- Traffic Signage Design
- Road Network Maintenance Program
- Tender Documents preparation
- Supervision of Transport Infrastructure Schemes



SKA Multimode Transfer Facility, north-west view, Greece

Railway Planning and Engineering

- Strategic Planning of Railway Networks and Integration into the overall Transport System, at national/regional scale and within large Metropolitan areas
- Railway Systems Planning and Mode Choice Forecasting
- Upgrading of existing Railway Corridors
- Railway Corridor Capacity Analysis and Railway Junctions Design
- Metropolitan Railway Networks Planning and Design
- Light Rail and Tramway Networks Planning and Design
- Planning and Engineering of Railway Terminals and Yards



Naxos island New Airport, Greece.

Design of Airport and Marine Infrastructure Projects

- Airport Site Selection and Masterplan
- Air Traffic Demand Forecasting
- Ground Access Studies of Airport Facilities
- Airport Landside Transport Systems and Parking Facilities Design
- Airport Apron and Air-side Design
- Port Planning and Land-side Traffic Design

Environmental Impact Studies

- Environmental Impact Assessment of Transport Infrastructure Projects
- Vehicular Traffic Noise Impact Assessment
- Impact of Transport Facilities on the Urban Environment

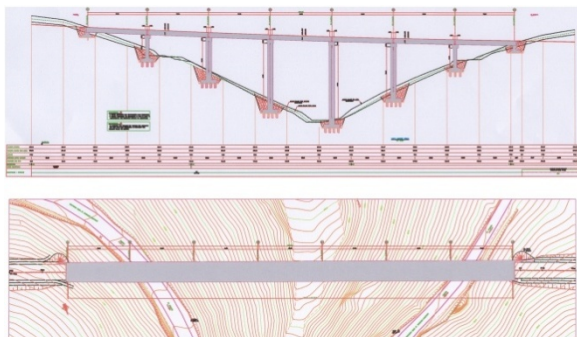
CONSULTING SERVICES (cont.)



Implementation of traffic management scheme for the first phase of the integration of Athens' archaeological sites, Greece



Hellenic Parliament. Four-level underground parking building at the perimeter of the main building. Complete functional and geometric design of access system. Internal traffic circulation and parking design



Design of a 270 m long Viaduct of the Amfissa - Lidoriki National Road, Greece



Aerial Photo of Nafplion town, Greece

Traffic Engineering / Management Studies

- Traffic Management for Urban Networks
- Corridor / Network Capacity Analysis
- Traffic Accidents Analysis and Traffic Safety Improvement
- Parking Demand Forecasting
- Parking Facilities Planning and Design
- Traffic Calming and Pedestrian Zones Planning and Design
- Bicycle Networks Planning and Design
- Traffic Design of Terminals (Airports, Ports, Railway Stations, Bus Stations, Freight Terminals)
- Traffic Impact Assessment Studies
- Regulatory and Information Signage
- Area-wide and/or corridor signalization studies

Design of Major Traffic Generators : Integrated Accessibility, Internal Vehicular & Pedestrian Circulation and Parking Facilities

- Functional and Geometric Design of Access Network and Connections
- Public Transport Access and Design of Terminal Facilities
- Functional and Geometric Design of Internal Vehicular and Pedestrian Network
- Functional and Geometric Design of Parking Areas / Buildings
- Coordination with Authorities and follow-up of Licensing Procedures
- Traffic Capacity Analysis and Impact Assessment
- Pedestrian and Vehicular Signage Studies

Structural Design of Buildings and Transport Infrastructure Projects

- Structural Analysis and Design of Buildings, Stadiums, Shelters, Garages
- Structural Design of Highway and Railway Bridges
- Structural Design of Transport Infrastructure Drainage and Retaining Structures
- Design of Concrete Pavements

Aerial Photography

- Aerial photography at various scales
- Use of color, B & W and false color films
- Automated film processing and printing
- Photogrammetric scanning

Photogrammetry

- Aerial triangulation
- Analytical and digital photogrammetry
- Photogrammetric mapping at large, medium and small scales
- DEM production and 3D city models
- Orthophotomapping
- Planning and implementation of complex mapping projects

Geographic Information System Applications

- GIS database development
- GIS custom application development
- Digital data production
- Digital mapping
- Planning and consulting services

Remote Sensing

- Image processing
- Geometric and radiometric correction of remotely sensed imagery
- Applications based on optical, multispectral and laser imagery

DEVELOPMENT STRATEGY, TRANSPORTATION PLANNING, FEASIBILITY STUDIES, PROJECT EVALUATION / MANAGEMENT

SELECTED PROJECTS

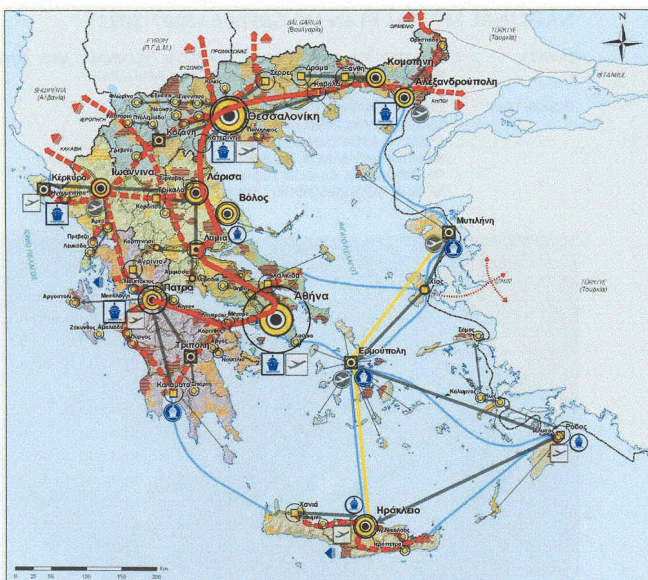


Al Madina A' Zarqa, Oman. Blue City development project.



Brega New Town, Libya.

- Transport networks planning.
- Configuration and functional design of transport infrastructure.



- Technical Consultancy to the Hellenic government on the planning, design, construction, financing and operation of five major toll motorway projects in the Attica region, Greece
- Hellinikon former airport redevelopment masterplan, Greece
- Preparation of 6 feasibility studies on upgrading of existing and construction of new railway lines co - financed by the Cohesion Fund, Greece
- Feasibility study of the new railway line Thessaloniki - Amfipoli - Toxotes (Xanthi area), Greece
- Feasibility Study for the Aktion-Preveza underwater tunnel, at the Northwest part of Greece
- Technical consultancy to the State Roads Directorate, Ministry of Maritime Affairs and Transportation, Montenegro. Bijelo – Polje Bypass Feasibility Study, Montenegro. Transport demand forecasting.
- Monitoring and management of the Attica prefecture regional development program within the framework of the 1st Community Support Framework for the period 1989 – 1994, Greece
- Hellas – 2010. Transport infrastructure development strategic plan. Regional development overview – Road, rail, marine and air transport subsystems.
- Adaptation of the transport systems infrastructure and development program within the framework of the strategic plan of the 2nd Community Support Framework for the period 1994 – 1999, Greece
- New Athens International Airport at Spata, Greece. Socio-economic feasibility study for co-financing of the project from the cohesion Fund and the European Investment Bank
- Technical and Financial advisory services for motorway concession projects to the Ministry of National Economy, Greece.
- Technopolis – Acropolis Hi-tech Business park development. Masterplan, Greece. Transport sector.
- Drapetsona urban regeneration scheme, Greece. Masterplan – transport sector.
- Feasibility study of the Elefsis-Korinthos-Patra railway line upgrading, Greece.
- Public transport service of Phaliron Olympic venues complex, Greece.

Hellenic National Spatial Plan (2007 – 2021).
Transport Sector.

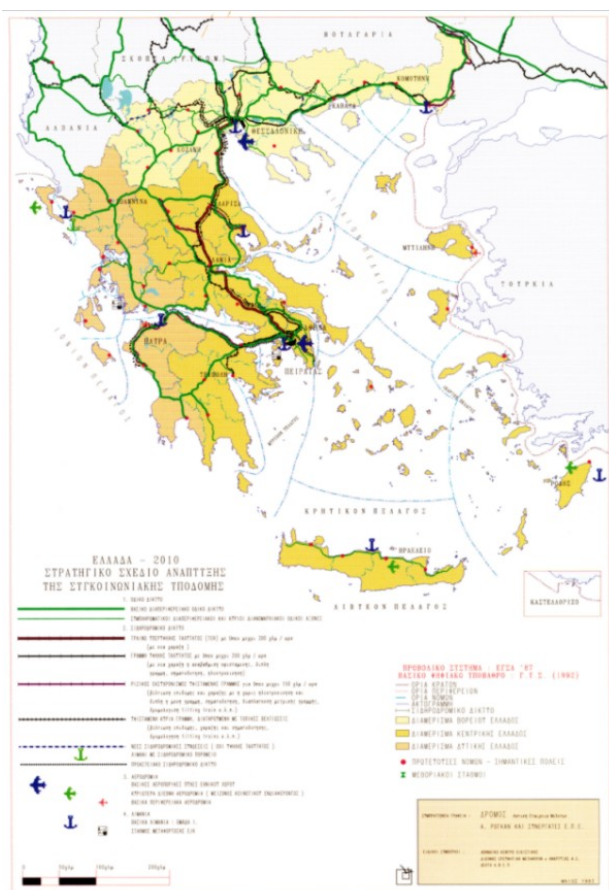
DEVELOPMENT STRATEGY, TRANSPORTATION PLANNING, FEASIBILITY STUDIES, PROJECT EVALUATION / MANAGEMENT

SELECTED PROJECTS (cont.)



1st Prize of City-planning Competition for the development of the architectural and urban concept of the Public Center of Sykhiv Residential District in Lviv, Ukraine. Transport system planning.

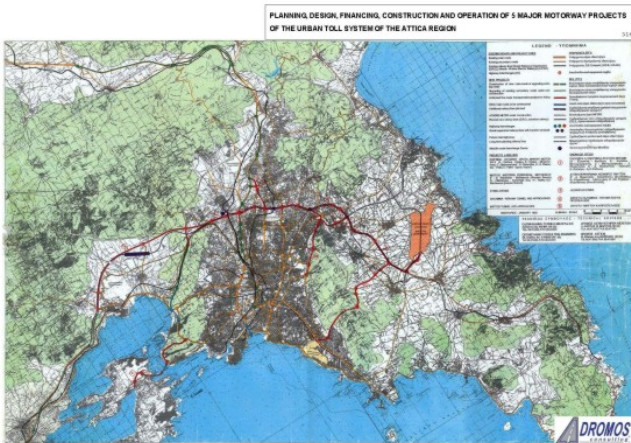
- Feasibility study of the new freeway connection link between the port of Piraeus and the Athens – Patras/Thessaloniki National Road, Greece.
- Transport systems infrastructure and development program “EPOALAA” within the framework of the 3th Community Support Framework for the period 2000 – 2006, Greece.
- Transport systems infrastructure and development program “Operational program accessibility” within the framework of the 4th Community Support Framework for the period 2007 – 2013, Greece.
- Marousi Municipal public transport, Greece. Development of bus network. Integration of an ultra-light rail system within the public transport system.
- Public transport routing and access system of Hellinikon Olympic venues complex, Greece..
- Feasibility study for the infrastructure of a new regional rail-bus service within the prefecture of Messinia, Greece.
- Hellenic World Center, Greece. People mover system.
- Hellenic World Center, Greece. Crowd management study
- Hellinikon Metropolitan Park, Greece. Internal circulation and public transport center.
- Short and Medium Range development programme - traffic volume forecasting of the main highway network of Athens Metropolitan area (Attica Prefecture), Greece.
- City of Kalamata, Greece. Public transport network restructuring and selection of a Tramway System.
- Strategic Development Plan and scheduling strategy for Attica Region Suburban Railway Network, Greece.
- Integrated operational and routing plan of Moraitis school bus transportation system, Greece.
- Evaluation of the technical and financial data for the on-line connection of Hellenic Railways Organisation (OSE)/MIS with the relevant European Railways MIS through the HERMES telematics network
- City-planning competition for the development of the architectural and urban concept of the public center of Sykhiv Residential District in City of Lviv, Ukraine. 1st Prize - Transport system planning
- Feasibility study and transport demand forecasting for the upgrading of Korinthos – Patras highway into a full standard motorway, Greece.
- Feasibility study and transport demand forecasting for the upgrading of Central Greece Motorway into a full standard motorway.



Hellas 2010. Transport Infrastructure Development Strategic Plan. Regional development overview - Road, rail, marine and air transport subsystems.

DEVELOPMENT STRATEGY, TRANSPORTATION PLANNING, FEASIBILITY STUDIES, PROJECT EVALUATION / MANAGEMENT

SELECTED PROJECTS (cont.)



Major Transportation Projects of Attica – Technical Advisor to the Hellenic Government.

- Urban transport network future configuration and hierarchy
- Modeling and travel forecasting
- Functional planning and design of 100 km long toll motorway network and 52 interchanges
- Monitoring and supervision of engineering design
- Concession tendering preparation

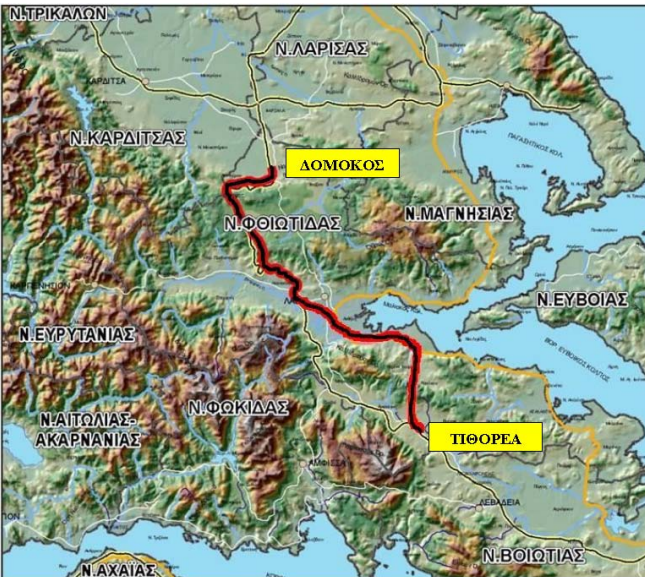
- Faliro Bay total Rehabilitation (Post Olympic Phase), Greece.
- Transport analysis and patronage forecasting for 4 extensions of the Athens Metro Network , Greece.
- City of Brega New Town Libya. Ttransport network planning and design, including a fixed rail system.
- National Spatial Plan of Greece (2007-2021).Transport Sector.
- City of Volos, Greece. Transport systems planning, functional design.
- Al Madina A' Zarqa – Blue City development project, Oman. Civil and internal road network design for the development of a 250.000 inhabitants new city at the coast of Arabic Gulf, 80 km north of Muscat, Sultanate of Oman.
- City of Kavala, Greece. Transport systems planning, functional design
- City of Trikala, Greece. Transport systems planning – functional design
- City of Rhodes, Greece. Transport system planning
- City of Kalamata, Greece. Transport system planning



Faliro Bay integrated rehabilitation scheme, Greece

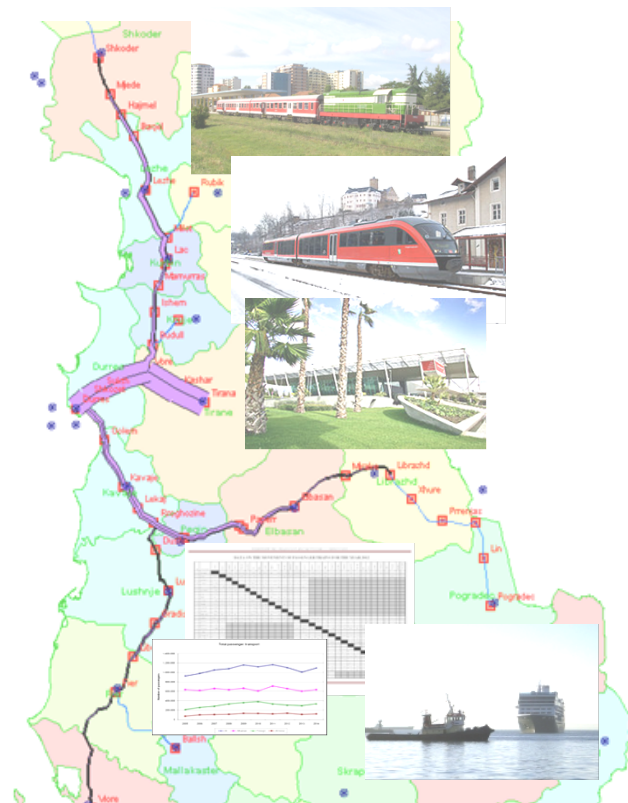
DEVELOPMENT STRATEGY, TRANSPORTATION PLANNING, FEASIBILITY STUDIES, PROJECT EVALUATION / MANAGEMENT

SELECTED PROJECTS (cont.)



Transport demand study, cost benefit analysis and support services for the submission of the rail project funding application for Tithorea-Domokos in CEF, Greece.

- Technical Consultancy Services on Transportation Engineering for the preparation of the Spatial Plan and Development Program of the Faliro Bay Area, Greece.
- Transport demand forecasting and feasibility study for Evia island new link to the mainland, Greece.
- Advisory services for the project “Development – Exploitation of the Ski Resort 3 – 5 Pigadia and the forest land of 7200 HA Property” of Naousa Municipality , Greece.
- Attica Region urban transport infrastructure concession projects, Greece.
- Financial / Economic Appraisal of the whole Albanian Railway Network, Albania.
- Feasibility Study and Cost – Benefit Analysis of the Athens – Patras Rail Connection and of the Railway Access to the City and Port of Patras, Greece
- Transport demand study, cost benefit analysis and support services for the submission of the rail project funding application for Tithorea-Domokos in CEF, Greece.
- Technical Consultancy Services on the preparation of the Operational Programme “Transport Infrastructure, Environment and Sustainable Development 2014 - 2020“, Greece
- Input data and Traffic forecasts for the update of the Cost Benefit Studies for the Hellenic Motorway Concession Projects, Greece



Detailed Design of Railway Line Dures – Tirana Public Transport Terminal (PTT) and of the new railway connection to Rinas Airport (TIA) and Financial / Economic Appraisal of the whole Albanian Railway Network , Albania



Feasibility Study and Cost – Benefit Analysis of the Athens – Patras Rail Connection and of the Railway Access to the City and Port of Patras, Greece

DEVELOPMENT STRATEGY, TRANSPORTATION PLANNING, FEASIBILITY STUDIES, PROJECT EVALUATION / MANAGEMENT

SELECTED PROJECTS (cont.)

Hellenic Motorways Concession Programme – TENs Hellas



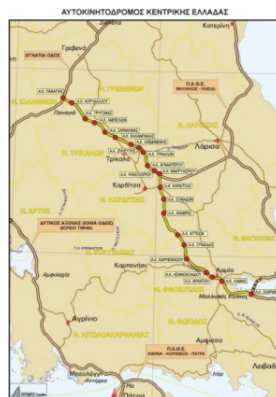
Technical and Traffic Consultant to the Financial Advisor for the Hellenic Motorways Concession Program (TEN's Hellas Group) for the concession tendering of 7 motorway projects :



- Maliakos – Kleidi Motorway, including 20km of new motorway segments in addition to 210km of upgrading of existing motorway segments.
- Ionia Odos Motorway, including 155km of new motorway segments in addition to 232km of upgrading, operation and maintenance of existing / under construction motorway segments (IONIA ODOS: Agrinio and Arta bypasses 52km, PATHE: Metamorfosi – Skarfeia 170km, Shimatari – Xalkida 10km).

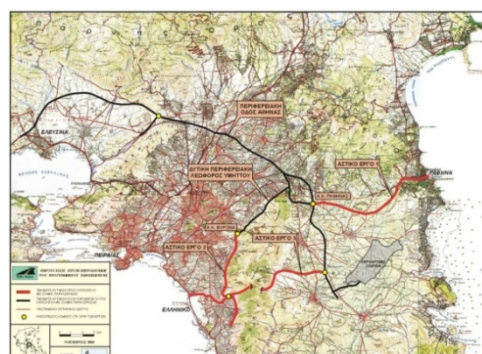


- Korinthos – Tripoli – Kalamata / Sparta Motorway, including 80km of new motorway segments in addition to 120km of upgrading, operation and maintenance of existing / under construction motorway segments (Korinthos – Tripoli 80km, Tripoli bypass 8.5km, Athinaion – Lefktro 20km, Paradissia – Tsakona 11.5km).



- Korinthos – Patra – Pyrgos – Tsakona Motorway, including 120km of new motorway segments in addition to 212km of upgrading, operation and maintenance of existing / under construction motorway segments (Elefsina – Korinthos 45km, Patra – Pyrgos – Tsakona 167km).

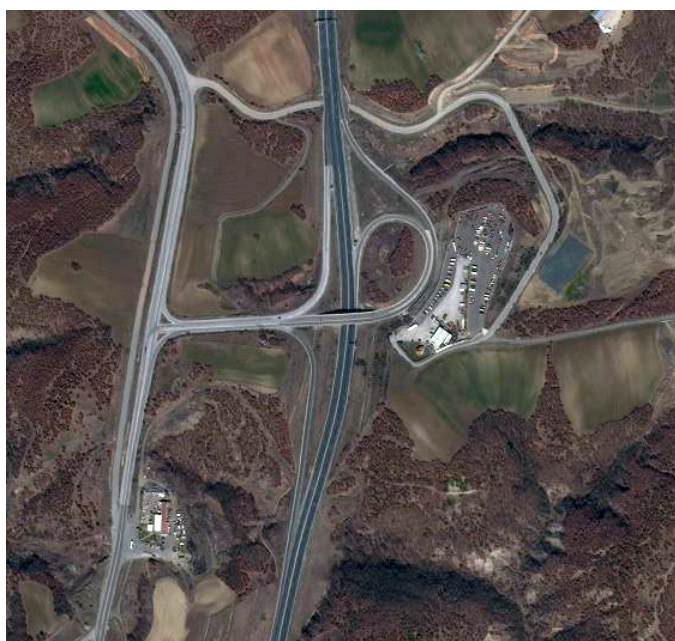
- Motorway of Central Greece including 196km of new motorway segments.
- Egnatia Odos including 295km of new motorway segments in addition to 385km of upgrading, operation and maintenance of existing / under construction motorway segments.



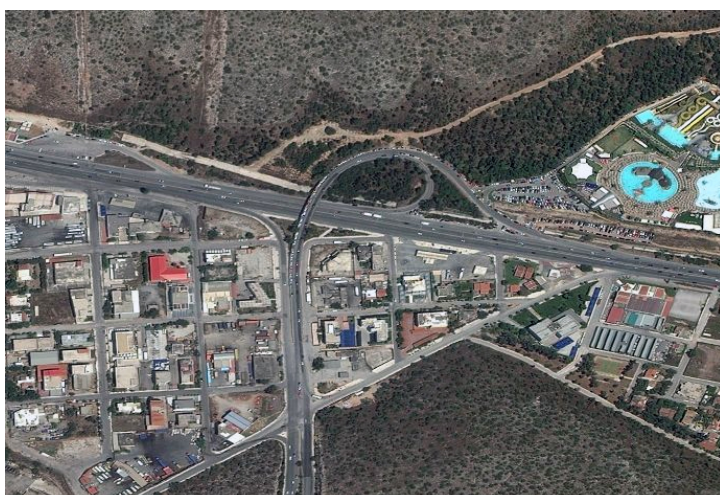
- Urban Projects in Attica and in Thessaloniki Regions, including 49km of new urban motorway segment in Attica Region (Eastern Branch of Imittos Western Peripheral 14.3km, Southern Section of Imittos Western Peripheral 17.4km, Imittos Tunnel and Connection of Spata Airport with Poseidonos Avenue 17.4km) and 4km of new urban motorway segment in Thessaloniki Region (Thessaloniki Underwater Artery).

HIGHWAY AND JUNCTION DESIGN

SELECTED PROJECTS



- Central Greece motorway, Greece. Advanced Reconnaissance Study (250 km). Functional design of 6 interchanges.
- Mount Hemittus, Greece. Peripheral expressway of Athens, 34 km.
- Athens-Salonica motorway, Greece. Lamia-Larissa section, 152 km.
- Athens-Korinthos motorway, Greece. Elefsis-Korinthos section, 56 km.
- Stavros-Elefsis motorway, Greece. Koukouvaounes-Elefsis section, 14 km.
- Up-grading of the existing Athens-Korinthos motorway, Greece. Dafni-Elefsis section, 12 km.
- Functional and Geometric Design of Transport Infrastructure at Faliro sea front, Greece. Posidonos highway, including Kifisos interchange and Trohiodromon highway to Piraeus (Target years 2004 and 2006).
- Egnatia motorway, Greece. Advanced reconnaissance study. Mesti – Kipi section (90 km).
- Development of a low cost dual carriageway of Athens-Patras and Athens-Salonica motorways sections, Greece.
- City of Agrinion, Greece. Designation of 10 kms urban section of National Road 5 to a four-lane urban arterial with service roads.
- Western Peripheral Imittos Motorway, Greece. Sections A18, A19, A20, 3,5 Km
- Functional Design of Kifisias Avenue, Greece. Section Olympic Stadium interchange - Marousi Municipality exit, 3,5 km
- Stavros-Elefsis motorway, Greece. Marousi – Gerakas section, 8,5 km and Zefiri –Aharnes Section 2,5 km
- Up-grading of Antirriion-Amfilochia national highway No 5, Greece. 110 km
- City of Kalamata peripheral highway, Greece. 12 km

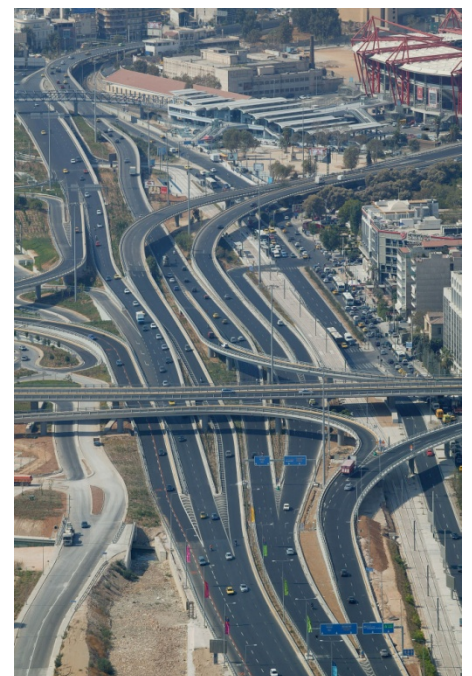


Egnatia Odos Motorway, Greece. Grevena by-pass

Development and Programming of Basic Road Network of Attica Prefecture, Greece.

HIGHWAY AND JUNCTION DESIGN

SELECTED PROJECTS (cont.)



Kifisos / Poseidonos system interchange complex and access system of Faliro central zone, Greece.

HIGHWAY AND JUNCTION DESIGN

SELECTED PROJECTS (cont.)



Syggrou – Lagoumitzi interchange, Greece. Functional design.



Korinthos – Kalamata Motorway, Greece.
Megalopoli - Kalamata segment. Paradeisia intersection.



- City of Rhodes peripheral highway (7.5 km) and new town entrance access, Greece.
- City of Agrinion peripheral highway, Greece. 7 km
- City of Rhodes, Greece. Urban network intersections design
- Korinthos - Kalamata motorway, Greece. Tripoli-Megalopoli 26 km section
- National Road No 5 motorway, Greece. Greater Agrinion bypass, 34 km complete motorway design study
- City of Rhodes, Greece. Upgrading of the city to Airport connection road.
- Plakentias urban freeway, Greece.
- Konstantinoupoleos urban freeway, Greece.
- Intermediate ring road of Athens CBD, Greece. Kareas – Katechaki – Galatsiou intermediate section.
- Reconnaissance study for the 40 km southern Egnatia Odos connecting motorway K40, between Panagia and the plain of Thessaly, Greece.
- Reconnaissance study for Athens urban concession projects of Hellinikon freeway, southern extension of Imittos peripheral freeway, Imittos tunnel and CBD eastern connection via Lecabettus tunnel, Greece.
- Preliminary study for the 165 km Central Greece Motorway E65 (tender)
- Preliminary study for the 50 km section Kouvaras – Arta of Ionia Odos Western Coast Motorway, Greece. (Tender)
- Reconnaissance and Preliminary study for Megaloxori - Agiasos road in the island of Lesbos, Greece.
- Ionia Odos operational study for the identification of connections and tolling systems, Greece.
- Egnatia Odos tolling system operational study, Greece.
- Egnatia Odos rest areas and service stations operational and reconnaissance study, Greece.
- Reconnaissance study for the rehabilitation of the Ardanio to Soufli 40 km section of Egnatia Odos vertical axis K80 to the Bulgarian borders.
- Reconnaissance study for the upgrading of the 21km axis between Amfissa and Lidoriki, Greece.
- Reconnaissance study for the new 25 km Evia island connection to the mainland, Greece.
- Thiva city western peripheral highway, Greece.
- Mount Penteli eastern peripheral motorway, Greece.
- Drafiou suburban highway, Greece.
- Korinthos – Tripoli – Kalamata, Greece. Complete design of 26 km of motorway including bypasses of Tripoli and Megalopoli and 5 interchanges.
- Korinthos to Patras 120 km motorway, Greece (including 13 interchanges). Advanced reconnaissance design (scale 1:5000) and prestudy (1:1000) of the selected solution.

Korinthos – Kalamata Motorway, Greece.
Tripoli – Megalopoli segment.

HIGHWAY AND JUNCTION DESIGN

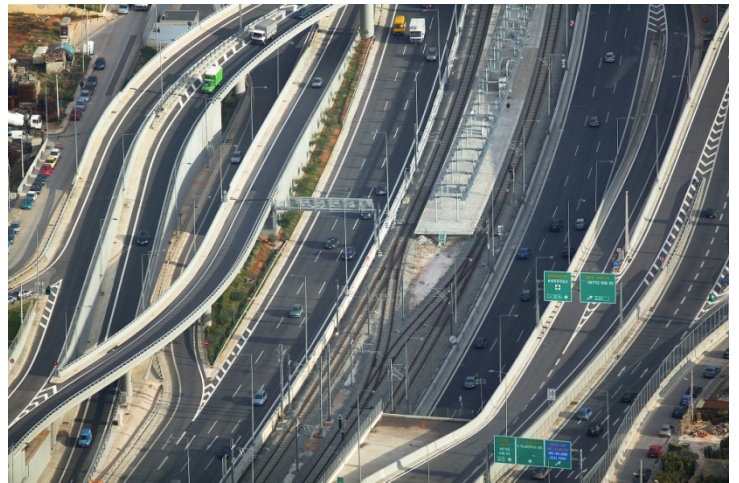
SELECTED PROJECTS (cont.)



Kifissias interchange

Athens External Peripheral Motorway (Attiki Odos), Greece

- 70 km functional design of the joint motorway and suburban railway corridor, including 52 interchanges and 18 railway stations including 3 mode interchange facilities
- 20 km complete motorway design study, including 8 interchanges.
- 12 km complete railway design study of Athens Suburban Rail Network, including 5 stations
- Complete detailed engineering design of Plakentias Metro Station and Depot



Plakentias interchange

HIGHWAY AND JUNCTION DESIGN

SELECTED PROJECTS (cont.)



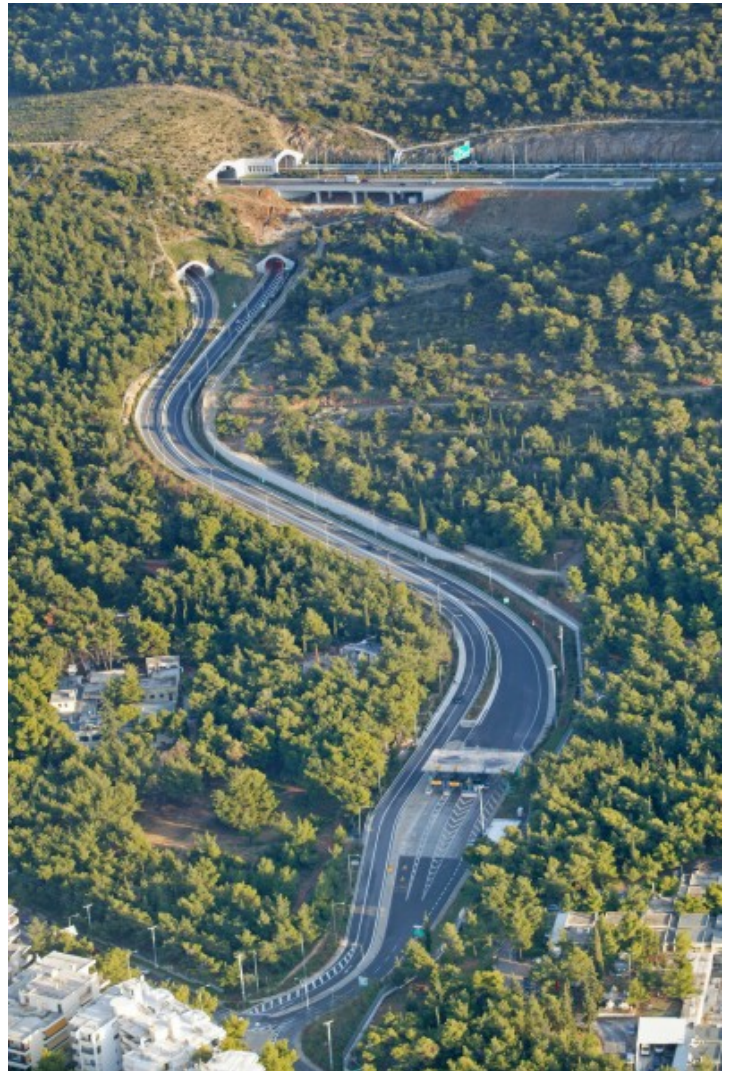
Ag. Paraskevi interchange



Dimokratias interchange

Athens External Peripheral Motorway (Attiki Odos), Greece

- 20 km complete motorway design study, including 8 interchanges.
- 12 km complete railway design study of Athens Suburban Rail Network, including 5 stations
- Complete design of Plakentias Metro Station and Depot



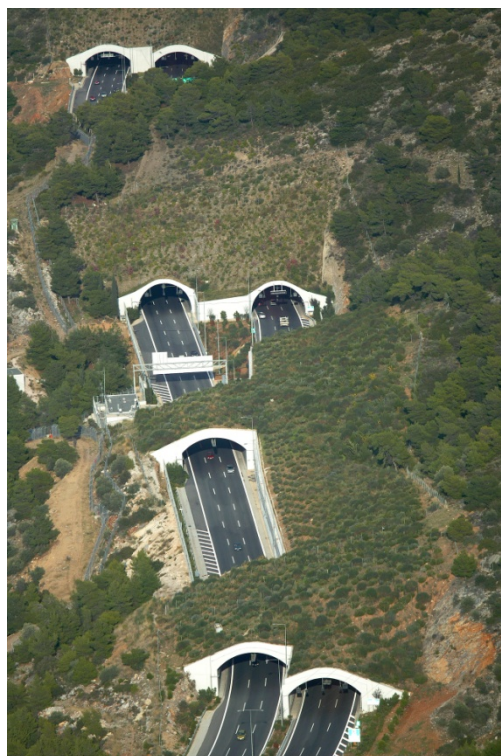
Cholargos interchange

HIGHWAY AND JUNCTION DESIGN

SELECTED PROJECTS (cont.)



New Airport interchange



Demokritos interchange



Imittos western peripheral motorway

Major Transportation Projects of Attica – Technical Advisor to the Hellenic Government.

- Urban transport network future configuration and hierarchy
- Modeling and travel forecasting
- Functional planning and design of 100 km long toll motorway network and 52 interchanges
- Monitoring and supervision of engineering design
- Concession tendering preparation

HIGHWAY AND JUNCTION DESIGN

SELECTED PROJECTS (cont.)



Metamorphosi interchange

Major Transportation Projects of Attica – Technical Advisor to the Hellenic Government.

- Urban transport network future configuration and hierarchy
- Modeling and travel forecasting
- Functional planning and design of 100 km long toll motorway network and 52 interchanges
- Monitoring and supervision of engineering design
- Concession tendering preparation



HIGHWAY AND JUNCTION DESIGN

SELECTED PROJECTS (cont.)



Marathonos interchange

Major Transportation Projects of Attica – Technical Advisor to the Hellenic Government.

- Urban transport network future configuration and hierarchy
- Modeling and travel forecasting
- Functional planning and design of 100 km long toll motorway network and 52 interchanges
- Monitoring and supervision of engineering design
- Concession tendering preparation



Western Egaleo Peripheral Interchange

HIGHWAY AND JUNCTION DESIGN

SELECTED PROJECTS (cont.)



Western Imittos Peripheral branching interchange



Koropi frontal toll plaza

Major Transportation Projects of Attica – Technical Advisor to the Hellenic Government.

- Urban transport network future configuration and hierarchy
- Modeling and travel forecasting
- Functional planning and design of 100 km long toll motorway network and 52 interchanges
- Monitoring and supervision of engineering design
- Concession tendering preparation



Ag. Paraskevi interchange

HIGHWAY AND JUNCTION DESIGN

SELECTED PROJECTS (cont.)



Ionia Odos Motorway, Greece. Acheloos crossing.



Ionia Odos Motorway, Greece. Rigani interchange.



Ionia Odos Motorway, Greece.

- Egnatia motorway, 6 Kms including Grevena bypass.
- Corridor X, Section : Grabovnica – Grdelica, Serbia. Complete motorway design.
- Kalamata circumferential highway reconnaissance study, Greece.
- Design of motorway connection between the town of Preveza and Ionia Odos Motorway, Greece. Pre-study and final design for the motorway and the service roads. Preliminary design, pre-study and final design for the interchanges. Road safety measures. Directional and regulatory signage.
- Ring Road for the City of Rhodes, Greece. Section Kallithea Interchange to Seferi street.
- Improvement and rehabilitation of Lesvos Island Regional Road no 5, Greece. Section Megalohori to Polihnitos Intersection.
- City of Rhodes, Greece. Urban expressway, local network reinstatement and intersections design.
- Attica Region urban transport infrastructure concession projects, Greece.
- Faliron Bay Masterplan, Greece. Design of internal circulation system and its relevant infrastructure, design of the external (urban) transport infrastructure. Tender documents.
- Detailed Design of Railway Line Durres – Tirana Public Transport Terminal (PTT) and of the new railway connection to Rinas Airport (TIA)



Korinthos to Patras Motorway, Greece. Reconfiguration of Rio interchange

RAILWAY PLANNING AND ENGINEERING

SELECTED PROJECTS



Ag. Anargyroi station

Upgrading and Development of Quadruple Railway Trunk Corridor from Rentis to SKA Multimode Transfer Facility, Greece

- 16 km long complete functional and geometric design of the composite railway and road corridor
- Functional planning and design of the Athens Central Railway Station
- Functional and geometric design of seven intermediate rail stations
- Central Athens District flood protection system along the corridor - Preliminary design
- Environmental Impact Assessment.

RAILWAY PLANNING AND ENGINEERING

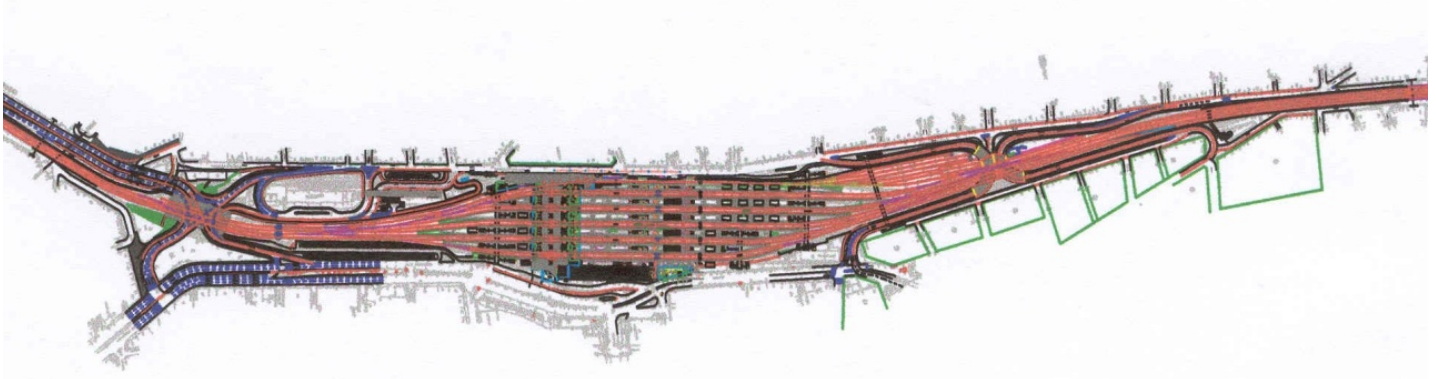
SELECTED PROJECTS (cont.)



“Roof” cargo station and stabling yard



Ag. I. Rentis Railway Station and maintenance yard



Athens Central Railway Station

Upgrading and Development of Quadruple Railway Trunk Corridor from Rentis to SKA Multimode Transfer Facility, Greece

- 16 km long complete functional and geometric design of the composite railway and road corridor
- Functional planning and design of the Athens Central Railway Station
- Functional and geometric design of seven intermediate rail stations
- Central Athens District flood protection system along the corridor - Preliminary design
- Environmental Impact Assessment.

RAILWAY PLANNING AND ENGINEERING

SELECTED PROJECTS (cont.)

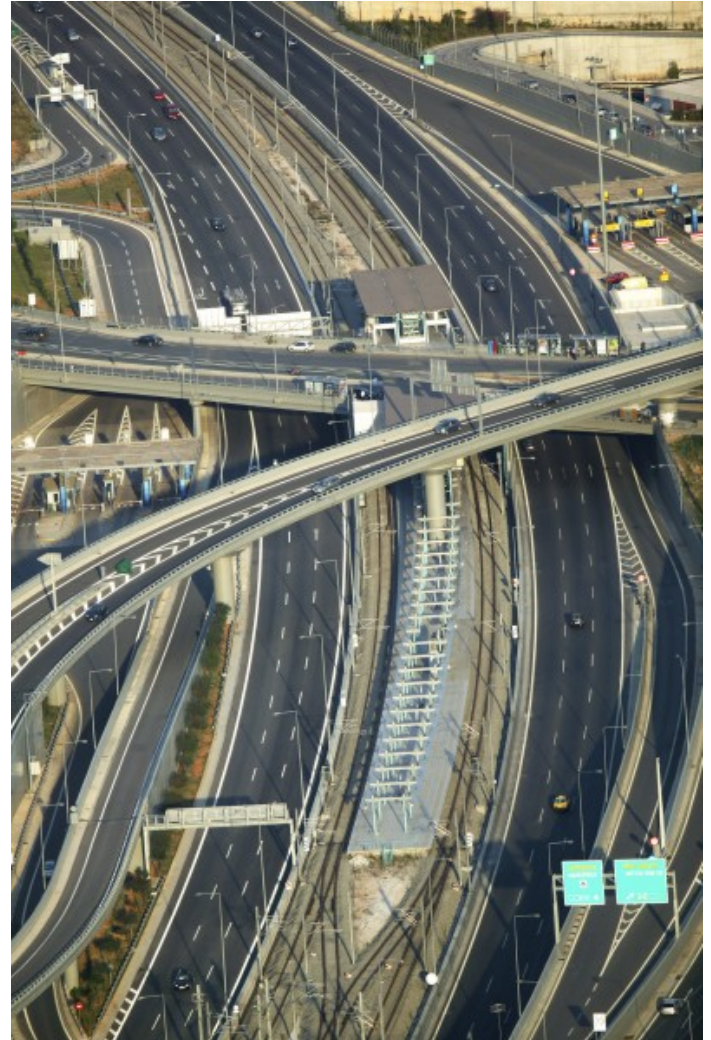


Plakentias interchange and multimode transfer facility, including 5-leg interchange, metro station, suburban railway station, bus terminal and Metro line 3 depot, Greece.

- New Thessalonica to Xanthi railway line and rail connection of “Nea Karvali” port and industrial area of Kavala, Greece
- Feasibility Study and Cost – Benefit Analysis of the Athens – Patras Rail Connection and of the Railway Access to the City and Port of Patras, Greece
- Advanced reconnaissance and preliminary design for the 40 km extension of Athens Suburban Railway from new Athens Airport railway interchange to the port of Lavrion, Greece
- Thessaloniki - Amphipolis - Toxotes Xanthi new rail corridor design and feasibility study, Greece
- Complete design of SKA - Acharnes Intermodal Transportation Center, Greece
- Metro line 3 extension from Ethniki Amyrna Station to Stavros Station, Greece
- New High-Speed Railway Line Athens - Thessaloniki: Section of Lamia and mountainous passage of Othris, Greece
- Technical Consultant for new tramway connection to Hellinikon depot and Argyroupoli Metro station, Greece
- Design of the New Tramway Connection to Hellinikon Depot and Argyroupolis Metro Station, Greece
- Operational Design Study for the Development light tramway spinal line along the core of Kalamata city, Greece
- Population and Employment Forecasts for the Attica Prefecture in the context of the Athens Metro Development Study, Greece
- Travel Demand Forecasting and Traffic Management Plan of the Athens Metro Extensions Programme, Greece
- Final design of Athens Central Railway Station, Greece
- Reconnaissance study for the 60 km northern high speed railway Athens connection between Thriassion and Aliartos, Greece
- Environmental Impact Assessment - Indirect Impacts of Athens Metro Operation on the urban environment, Greece

RAILWAY PLANNING AND ENGINEERING

SELECTED PROJECTS (cont.)



Plakentias interchange and multimode transfer facility, Greece. Suburban railway station.

- Development and Programming of Basic Road Network of Attica Prefecture, Greece
- Supplementary Feasibility Study of the Thriassio Railway Freight Center, Greece
- Setting Priorities for Transport Infrastructure in Greece in view of the Community Support Framework 2000 – 2006, Greece
- Feasibility Study of the new Athens International Airport at Spata, Greece
- Extension of the Attiko Metro Line 3 from Nomismatokopeio Station up to OAKA and the transfer Station of Neratziotissa, Greece
- Complete design of STAVROS Athens Metro Station, Greece
- Complete design of Metro line 3 extension from Stavros Station to the Athens airport suburban rail corridor, Greece
- Pre-feasibility study for the development of Messinia local railway service, Greece
- Light Tramway System Planning at Amaroussion Municipality, Greece
- Athens coastal front Tramway line, Greece
- Railway line relocation and rearrangement of local road network in the context of Agrinio Bypass Highway Design Study, Greece
- Korinthos – Patra railway and motorway corridor development, Greece
- Design of the New Tramway Connection to Hellinikon Depot and Argyroupolis Metro Station, Greece.
- Elaboration of required studies for the implementation of an Ultra Light tram system in the Kalamata Public Transport System, Greece

RAILWAY PLANNING AND ENGINEERING

SELECTED PROJECTS (cont.)

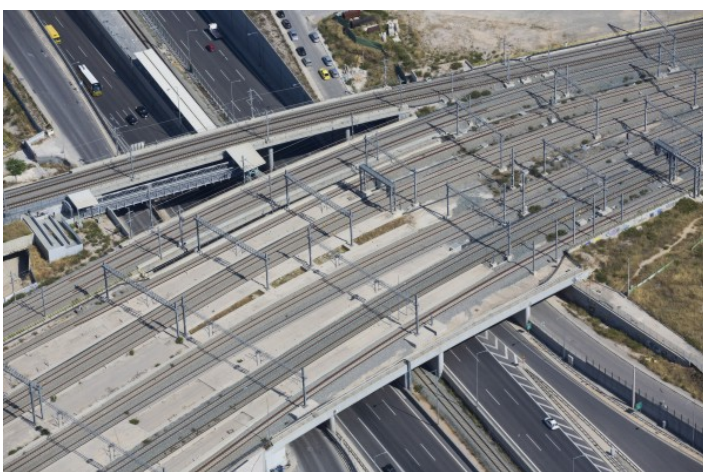


Railway corridor in the median separation of Athens External Peripheral Motorway, Greece.

- Strategic Development Plan of Transportation Infrastructure - Greece 2010. Rail Subsystem.
 - Feasibility study of Elefsina - Korinthos new railway line, Greece
 - Feasibility Study of the new high speed railway line Evagelismos - Leptokarya , Greece
 - Feasibility Study of the new railway complex at Thriassio Basin, Greece
 - Feasibility Study of Thessaloniki - Alexandroupolis rail corridor upgrading, Greece
 - Feasibility Study of Palaiofarsalos - Kalambaka rail line upgrading, Greece
 - Feasibility Study of Plati - Amindeo - Kozani and Amindeo - Florina railway lines rehabilitation, Greece
 - Urban development study of Athens and Piraeus Railway Station Areas, Greece.
 - Rail link between Ikonio container port and Thriassio Railway Freight terminal, Greece
 - Development and Programming of the Menidi Intermodal Transport Center, Greece
 - Final design of Athens central passenger rail depot in Ag. Ioannis Rentis, Greece
 - Piraeus – Athens – SKA trunk rail corridor upgrading with grade separation crossings of vehicles and pedestrians, Greece.
-
- Financial and Socio-economic Evaluation of three Railway Projects for the Cohesion Fund 2000-2006, Greece.
 - Supplementary Feasibility Study for the project "Modernisation of the Athens - Patras railway line (section: Thriassio Complex - Elefsina - Korinthos - Kiato)", Greece
 - Design of tramway extension to the Hellinikon Business Centre Metro Station and new depot connection bypassing the Hellinikon metropolitan park, Greece.
 - Preliminary design of freight railway terminal and container depot for Thriassion multimodal logistics centre (tender), Greece
 - Strategic plan of Attica Suburban Railway Network Development, Greece
 - Transport demand study, cost benefit analysis and support services for the submission of the rail project funding application for Tithorea-Domokos in CEF, Greece.

RAILWAY PLANNING AND ENGINEERING

SELECTED PROJECTS (cont.)



SKA Multimode Transfer Facility, Greece.

- Suburban railway network strategy planning
- Metropolitan area-wide transport modeling and travel forecasting
- Urban development and adaptation of SKA to the surrounding urban tissue
- Functional planning and engineering design of SKA complex
- Preliminary design and prestudy of buildings
- Complete geometric design of railway network, terminals and road access system
- Complete engineering design of water drainage system
- Environmental Impact Assessment

DESIGN OF AIRPORT AND MARINE INFRASTRUCTURE

SELECTED PROJECTS



Strategic Plan for Transport Infrastructure – Greece 2010.
Air Transport and Airport Infrastructure Subsystem Masterplan.

- Ioannina International Airport, Greece. Landside design.
- New Kastelli International Airport, Greece. Preliminary Design for the concession project of the new Airport .
- Thessaloniki Airport, Greece. Updating of operational plan and cost-benefit analysis for the upgrade of Thessaloniki Airport “Makedonia”.
- Chania Airport, Greece. Socioeconomic feasibility study.
- Athens International Airport, Greece Detailed design study for the expansion of the long term parking and creation of a new taxi staging area
- Athens International Airport, Greece. Traffic design of the Cargo Operators Installations
- Naxos island New Airport, Greece. Location study, Masterplan and engineering design. Environmental Impact Assessment.



Chania Airport, Greece.
Socioeconomic feasibility study. New terminal land-side planning and design (design-build tender).



Rhodos Airport, Greece.
Airside upgrading final design and tender documents



- Mykonos Airport, Greece**
- Complete engineering study of air-side upgrading and extension of runway
 - Tender documents preparation.
 - Ground access system, internal traffic and parking system – Design/Build tender.

DESIGN OF AIRPORT AND MARINE INFRASTRUCTURE

SELECTED PROJECTS (cont.)



- Athens International Airport “Eleftherios Venizelos”, Greece. Socio-economic Feasibility Study for co-financing of the project by EU Cohesion Fund and European Investment Bank.
- Ikaria island new airport, Greece. Complete design and tender documents for runway extension and marine works for the protection of runway foundation.
- Skyros island airport, Greece. EIA study.
- Strategic Plan for Transport Infrastructure – Greece 2010. Air Transport and Airport Infrastructure Subsystem Masterplan.
- Chania Airport, Greece. New terminal land-side planning and design (design-build tender).
- Rhodos Airport, Greece. Air-side upgrading final design and tender documents.



Heraklion Airport, Crete, Greece.
Landside traffic circulation and parking system.

“King Pyrrros” Ioannina International Airport, Greece.
Landside and access design.



Syros island airport, Greece. Landside planning and design.

DESIGN OF AIRPORT AND MARINE INFRASTRUCTURE

SELECTED PROJECTS (cont.)



New International Athens Airport El. Venizelos, Greece.

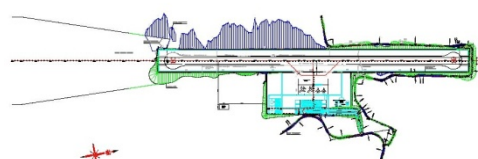
New airport location study. Socioeconomic feasibility study. Airport ground access system. Traffic design of cargo community related operations building. Long-term parking facility. Commercial complex traffic impact study and engineering design of access system.



Thessaloniki Airport, Greece.

Updating of operational plan and cost-benefit analysis for the upgrade of Thessaloniki Airport "Makedonia".

- Mykonos Airport, Greece. Air-side upgrading and runway extension final design and tender documents.
- Athens International Airport "Eleftherios Venizelos", Greece. Identification of ground access system traffic characteristics.
- Syros Airport, Greece. Land-side planning and design.
- Hellinikon International Airport, Greece. West Terminal remodeling and development masterplan.
- Ikaria island airport, Greece. Detailed engineering design.
- Hellinikon airport, Greece. Complete design of internal circulation system and parking areas of 950 cars capacity for passengers/visitors and 650 cars capacity for Olympic Airways employees.
- Heraklion Airport, Crete, Greece. Terminal and land-side circulation system.
- New Athens International Airport, Greece. Consulting services on auditing and reviewing the Masterplan and the Prestudy of the Airport.
- New Athens International Airport, Greece. Consulting services on the Masterplan development.
- New Athens International Airport, Greece. Location Study.
- Port infrastructure development priorities for the 3rd CSF program 2000-2006
- Rhodes New Harbour Masterplan and access system design
- Agios Kyrikos port development masterplan
- Cephalonia island. New port of Pesada and road access system.
- Technical consultant for the Hellenic Peripheral Airports Concession Project, Greece

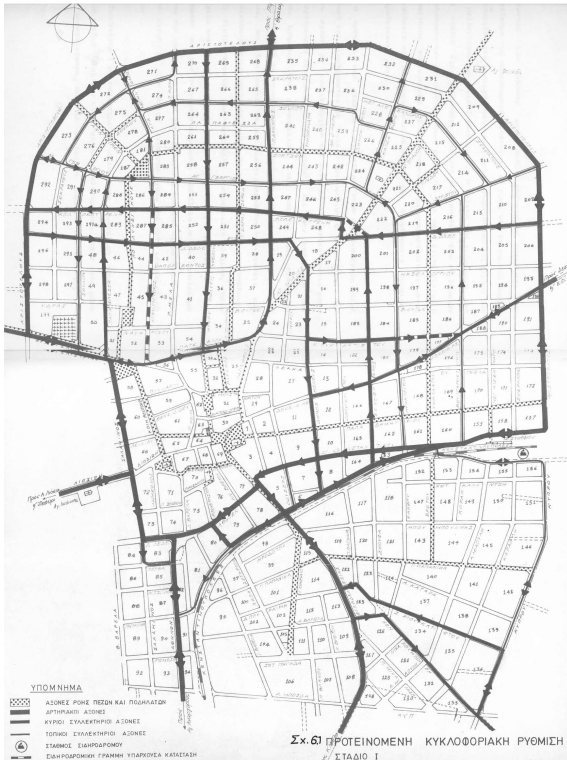


Naxos island New Airport, Greece.

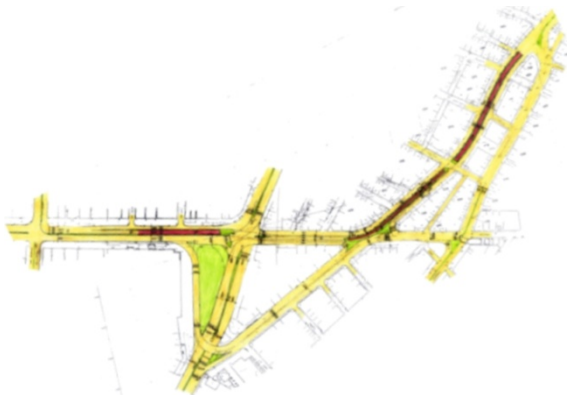
Site selection, Masterplan, Airside and Landside design.

TRAFFIC ENGINEERING / MANAGEMENT STUDIES

SELECTED PROJECTS



Municipality of Aharnes Traffic Management Study, Greece



Ampelokipi area traffic management scheme, Greece



Municipality of Argroupolis, Greece. Traffic Management Study

- Athens Old Town, Plaka area, Greece. Traffic management scheme
- Athens downtown commercial center, Greece. Traffic management scheme
- City of Kalamata, Greece. Traffic management scheme
- Traffic accident analysis and corrective measures / improvements over a 1200 km section of the principal road network of Western Greece
- City of Alexandroupoli, Greece. Traffic management scheme
- Traffic planning and design of numerous major traffic generators such as hospitals, university campuses, stadiums, hotel complexes, industrial plants, shopping centres, parking garages etc.
- Town of Thivae, Greece. Traffic management scheme
- Town of Argos, Greece. Traffic management scheme
- Rhodes city, Greece. Traffic management scheme
- Traffic engineering improvements of Athens Airport land-side circulation system - Olympic Airways Terminal
- Vilonet EEC financed research project on new technology traffic management schemes on Athens coastal highway (Poseidonos Avenue) and the access system of Hellinikon Airport
- Traffic Impact and Management Study of Athens CBD in the context of the pedestrianization of Apostolou Pavlou, Dionisiou Areopagitou corridor for the integration of Athens Archeological Sites.
- Municipality of Psihiko, Greece. Traffic Management Study
- Municipality of Argiroupolis , Greece. Traffic Management Study
- Municipality of Aharnes , Greece. Traffic Management Study
- National road Tripolis – Sparta – Gythio road safety improvements, Greece.
- Greece – Cyprus road safety profiles
- Municipality of Glyfada, Greece. Traffic Study.
- Road Safety Audit of Concession Projects Ionia Odos Motorway and Motorway of Central Greece

TRAFFIC ENGINEERING / MANAGEMENT STUDIES

SELECTED PROJECTS (cont.)

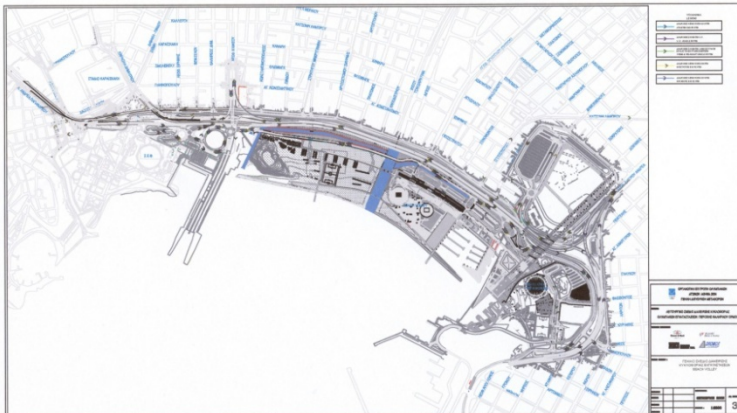


Implementation of traffic management scheme for the first phase of the integration of Athens's archaeological sites, Greece.

TRAFFIC ENGINEERING / MANAGEMENT STUDIES

SELECTED PROJECTS (cont.)

Transport and traffic consulting services for the Athens 2004 Olympic Games



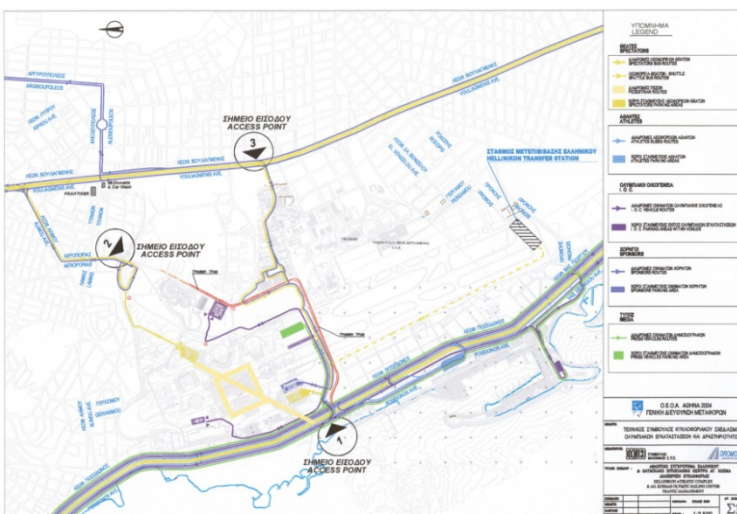
Faliro Olympic Venues complex

Consulting Services to Athens 2004 Organizing Committee

- Identification of transportation policies during the Olympic Games.
- Public transport policy.
- Identification of criteria and spatial location of Olympic transfer stations.
- Distribution to public transport modes.
- Olympic transport routing for each venue and client group.
- Elaboration of traffic management schemes and network functional design with the application of SATURN traffic simulation model.
- Fleet management and access corridors blocking for general traffic for the needs of the opening and closing ceremonies.
- Design of exclusive Olympic lanes network within the Olympic ring and radial arterials.
- Venue specific accessibility and outside the fence traffic studies for :
 - Piraeus port Olympic Zone
 - Press Dormitories at Ilissia and Zografou University Campuses.
 - Helliniko Olympic Venue
 - Nikaia Weightlifting Olympic Venue
 - Vouliagmeni Triathlon Olympic Venue
 - Peristeri Boxing Olympic Venue
 - Faliro Beach Volley Olympic Venue and fleet hab.



Nikaia Weightlifting Olympic Venue



Helliniko Olympic Venues complex

TRAFFIC ENGINEERING / MANAGEMENT STUDIES

SELECTED PROJECTS (cont.)

Transport and traffic consulting services for the Athens 2004 Olympic Games



Olympic Tae Kwon Do Arena



Regeneration of Phaliron Bay Coastal Area. Volleyball, Beach Volleyball, Handball and Tae Kwon Do Olympic Venues.



Karaiskakis Stadium

Traffic planning and access / parking design of Olympic Venues and Facilities

- Markopoulo Shooting Center
- Karaiskaki Football Stadium
- Pallini Press Village
- Peace and Friendship Olympic Volleyball Stadium
- Olympic Tae Kwon Do Arena
- Beach Volley Venue
- Olympic Equestrian Center (Tender)
- Olympic International Broadcasting Center (Tender)
- Table tennis and rhythmic gymnastics Olympic sports hall



Markopoulo Olympic Shooting Center.



Olympic Press Village in Pallini.



International Broadcasting Centre (IBC)

Services Rendered :

- Accessibility design
- Mitigation of traffic impact to public network
- Functional and geometric design of internal circulation and parking for each vehicle category.

TRAFFIC ENGINEERING / MANAGEMENT STUDIES

SELECTED PROJECTS (cont.)

Area-wide and/or Corridor Signalization Studies - Regulatory and Information Signage

- Prestudy for the optimization of signalization for Athens Metropolitan Area, Greece
- Upgrading of the Attica Prefecture signalization, Greece
- Elaboration of signalization programs for the following interchanges in Athens CBD : Dyraxiou – Konstantinoupoleos, Kapodistriou, Prigiponnison, Kallitheas, Galatsiou, Greece
- Traffic management study, functional and geometric design of intersections, elaboration of signalization programs and regulatory and informatory signage design in Athens CBD, Greece, in the context of extensive pedestrianization of road links for the integration of Athens Archaeological Sites
- Technical consultancy services – Traffic management and signalization studies for Athens Metropolitan Area in the context of Athens 2004 Olympic Games.
- Shopping Centre in the vicinity of Larissa city, Greece, with parking for 4.000 cars. Accessibility study, traffic management study for affected road network, signage design, internal circulation and parking design.
- City of Rhodes Ring Road, Greece. Functional and geometric design of arterial, service roads and intersections/ interchanges, including the design of regulatory signage, informatory signage and signalization programs.
- Municipality of Argyroupolis, Athens, Greece. Traffic management study, redesign of regulatory signage across the whole Municipality and elaboration of signalization programs for all signalized intersections.
- IKEA Commercial centre at Kifissos Avenue, Athens, Greece. Accessibility study, traffic management study for the affected road network, functional and geometric design of modifications at affected intersections and interchanges, regulatory and informatory signage design and elaboration of new signalization programs, where required.
- Mont Parnes Hotel-Casino, Athens, Greece. Functional and geometric design of parking, including regulatory and informatory signage.
- Hellenic World Center at Eleonas district, Athens, Greece. Accessibility study, traffic management study for the affected road network, functional and geometric design of modifications at affected intersections and interchanges, regulatory and informatory signage design and elaboration of new signalization programs, where required.
- Athens International Airport, Greece. Functional and geometric design for the expansion of the long term parking to 5.000 lots (from an existing capacity of 2000 lots) and the creation of a new taxi staging area, along with regulatory and informatory signage.
- New PHILIP MORRIS industrial establishment factory in Aspropyrgos, Attica Prefecture, Greece. Accessibility and traffic management study. Functional and geometric design of modifications at affected intersections and interchanges, along with elaboration of new signalization programs. Functional and geometric design of internal road network and parking areas, including regulatory and informatory signage.
- Design of signalization for Nethodas district in the town of Kalamata, Greece

TRAFFIC ENGINEERING / MANAGEMENT STUDIES

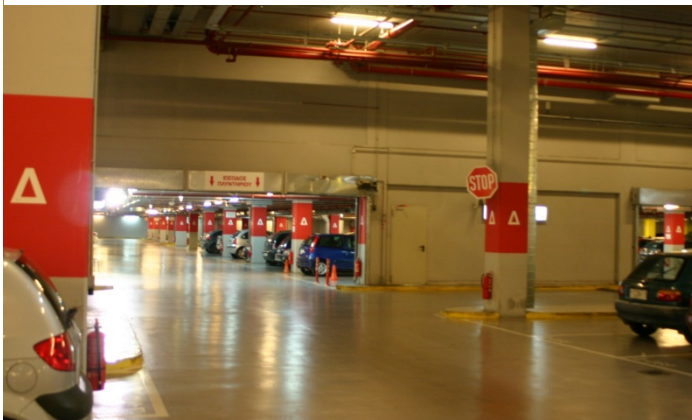
SELECTED PROJECTS (cont.)

Area-wide and/or Corridor Signalization Studies - Regulatory and Information Signage

- New Factory Outlet Megastore at the commercial park of the New Athens International Airport, Greece. Accessibility study, traffic management study for the affected road network, functional and geometric design of modifications at affected intersections and interchanges, regulatory and informatory signage design and elaboration of new signalization programs, where required.
- Club Hotel Casino Loutraki, Greece. Accessibility study, traffic management study for the affected road network, functional and geometric design of modifications at affected intersections and interchanges, regulatory and informatory signage design and elaboration of new signalization programs, where required.
- Faliro Bay rehabilitation in the context of the Athens 2004 Olympic Games. Functional and geometric design of arterial network and interchanges, along Faliro Bay Coast. Functional and Geometric design of internal circulation and parking system, including regulatory and informatory signage, accessibility study and traffic management study.
- Functional and geometric design for an ultra light tram system for the town of Kalamata, Greece, including reorganization of Public Transport System. Traffic management study for the rearrangement of the urban road network, including elaboration of signalization programs.
- Refurbishment and conversion of Galatsi Olympic Venue, Athens, Greece into a shopping center. Accessibility study, traffic management study for the affected road network, functional and geometric design of modifications at affected intersections and interchanges, regulatory and informatory signage design and elaboration of new signalization programs, where required.
- New Panathinaikos FC football court and sports center at Elaionas area, Athens, Greece. Accessibility and traffic management study. Functional and geometric design of modifications at affected intersections and interchanges, along with elaboration of new signalization programs. Functional and geometric design of internal road network and parking areas, including regulatory and informatory signage.
- New Olympiacos FC football court and sports center, Piraeus, Greece. Accessibility and traffic management study. Functional and geometric design of modifications at affected intersections and interchanges, along with elaboration of new signalization programs. Functional and geometric design of internal road network and parking areas, including regulatory and informatory signage.
- New Panionios FC football court and sports center, N. Smyrni Municipality, Athens, Greece. Accessibility and traffic management study. Functional and geometric design of modifications at affected intersections and interchanges, along with elaboration of new signalization programs. Functional and geometric design of internal road network and parking areas, including regulatory and informatory signage.
- New AEL FC football court and sports center, Larissa, Greece. Accessibility and traffic management study. Functional and geometric design of modifications at affected intersections and interchanges, along with elaboration of new signalization programs. Functional and geometric design of internal road network and parking areas, including regulatory and informatory signage.

DESIGN OF MAJOR TRAFFIC GENERATORS : INTEGRATED ACCESSIBILITY, INTERNAL VEHICULAR & PEDESTRIAN CIRCULATION AND PARKING FACILITIES

SELECTED PROJECTS



Shopping Malls / Commercial

- Splendid Commercial Center with 3 underground parking levels at Pasa Limani, Greece. Complete operational and geometric design study of access, internal circulation and parking system.
- MAKRO Hypermarket in Heraklion, Crete island, Greece. Traffic access and internal circulation study.
- MAKRO Hypermarket in Patras, Greece. Access, internal circulation and parking study. Traffic impact assessment study.
- MAKRO Hypermarket at Kifisos Avenue, Greece. Rearrangement of access, internal circulation system and parking system. Operational incorporation of car wash installation.
- MAKRO Hypermarket at Pallini, Greece. Traffic system, access, internal circulation and parking system. Traffic impact assessment study. Road access improvement study.
- Continent Supermarket at Kifisias Avenue, Greece. Access and traffic connection study, road network and fuel station Design.
- Carrefour Marinopoulos Supermarket, Greece. Traffic System Study. Improvement and rearrangement of Xeimaras Street access in view of the Supermarket's operation.
- Carrefour Supermarket at Chalkis, Greece. Traffic connection, internal circulation and parking study. Traffic impact assessment study.
- BIOHALKO Shopping Center at Kifisos Avenue, Greece. Access system, internal circulation and parking system (2100 parking spaces - ground and two underground parking levels. Traffic impact assessment study.
- Factory Outlet Megastore at El. Venizelos Airport. Traffic system design. Design of the surrounding area drainage network.
- Commercial – intermodal center ELVIEMEK, Greece. Traffic system, access, internal circulation and parking system. Traffic impact assessment study, railway connection preliminary study.
- New shopping centre at Athinon Avenue. Complete operational and geometric design study of access, internal circulation and parking system (2.500 cars).
- New IKEA shopping centre in Larissa city, Greece. Access and traffic study. Organisation of affected network operational pattern. Functional and geometric design of internal circulation and parking.

IKEA - River West Shopping Mall, Athens, Greece

DESIGN OF MAJOR TRAFFIC GENERATORS : INTEGRATED ACCESSIBILITY, INTERNAL VEHICULAR & PEDESTRIAN CIRCULATION AND PARKING FACILITIES

SELECTED PROJECTS (cont.)



McARTHURGLEN Shopping Mall, Athens, Greece



Factory Outlet Megastore at El. Venizelos Airport, Greece.

Shopping Malls / Commercial (cont.)

- IKEA Shopping Center at Kifisos Avenue, Greece. Accessibility study. Functional and geometric design of internal circulation and parking system for 2100 parking spaces at ground level and two underground parking lots. Traffic impact assessment study
- McARTHURGLEN Shopping Mall, Greece. Complete functional and geometric design of accesses, internal circulation and 3 level parking system for 2.850 cars.
- Access, organization, internal circulation and parking Study of “ROTA-SPRIDER” Complex at Pallini, Greece. Traffic connection approval by pertinent authorities. Traffic impact assessment study.
- Vrbani, Zagreb, Croatia. Development of an office and shopping complex with multilevel underground parking. Vehicular access, internal circulation and parking system. Geometric design of ramps.
- New shopping mall at Larisa city, Greece. Complete functional and geometric design of accesses, internal circulation and parking system for 3.500 cars, service and supply chain vehicles, including parking and maneuvering aprons and loading docks.
- Shop and Trade building complex, Greece. Complete functional and geometric design of accesses, internal circulation and parking system for 180 cars, service and supply chain vehicles, including parking and maneuvering aprons and loading docks.
- Karteros Properties SA. Minoan Plaza shopping mall, 35.000 sq.m., Heraklion, Crete island, Greece.. Complete functional and geometric design of accesses (North Cretan Motorway and old National Road), internal circulation and parking system for 2000 cars, service and supply chain vehicles, including parking and maneuvering aprons and loading docks.
- «Agora Pireos» Recreational Centre, Greece. Complete functional and geometric design of accesses, internal circulation and parking system for approximately 1000 cars.
- “ROTA” exhibition center at Pallini, Greece. Parking study. Traffic impact assessment study.
- Technopolis – Acropolis Hi-tech Business park development, Greece. Complete functional and geometric design study of access, internal circulation and parking system.
- Parko Aegeou S.A., Greece. Revision of traffic study. Internal circulation and parking system.

DESIGN OF MAJOR TRAFFIC GENERATORS : INTEGRATED ACCESSIBILITY, INTERNAL VEHICULAR & PEDESTRIAN CIRCULATION AND PARKING FACILITIES

SELECTED PROJECTS (cont.)



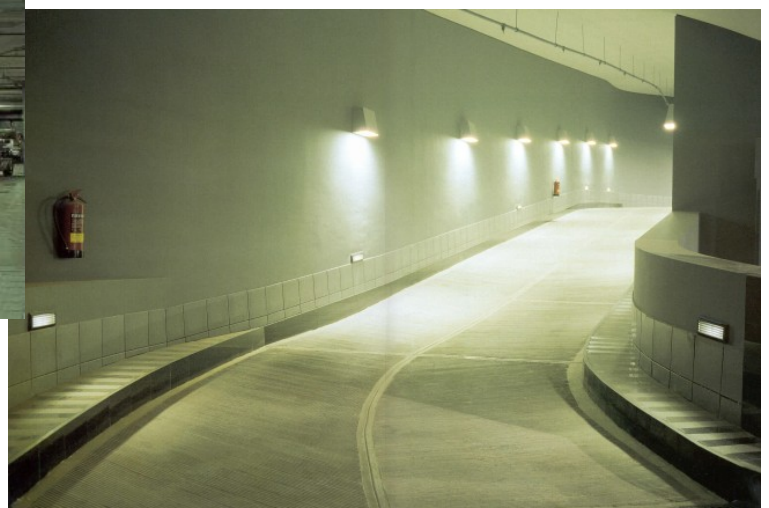
Office building, Mavrakakis property, Greece, with two underground parking levels.



Office Building in Glyfada, Greece, with multi-level underground parking

Offices / Public Buildings

- AEGEK office building at Marousi, Greece. Access system, internal circulation and parking system with three underground parking levels. Traffic impact assessment study.
- I.A. Kontellis SA office building with 4 underground parking levels, Greece. Complete design study of access system and parking levels. Traffic impact assessment study.
- Sanitas office building on Kifisias Avenue and Pagka street, L. Riankour street and Laskaridou Street in Athens, Greece. Access system, internal circulation and parking on five underground parking levels. Traffic impact assessment study.
- Office building in Oslo, Norway. Access system, internal circulation and parking system study (Competition).
- Agrotiki Insurance Building at Syggrou Avenue, Greece. Study of traffic system, access, internal circulation and parking system in underground levels.
- Antenna Group of Companies Headquarters in Anixi, Greece. Access, internal circulation system and underground parking system in two levels.
- Olayan Group of Companies Headquarters with two underground parking levels in Glyfada, Greece. Complete operational and geometric design study of access, internal circulation and parking system.
- Mavrakakis building, Athens, Greece. Access, internal circulation and parking system study with two underground parking levels.
- Office building at Apostolopoulou 26 Street at Chalandri, Greece. Rearrangement of existing basement study and office building extension with underground parking areas.
- Kampas estate in Pallini, Greece. Transportation design of multi-phased development.



DESIGN OF MAJOR TRAFFIC GENERATORS : INTEGRATED ACCESSIBILITY, INTERNAL VEHICULAR & PEDESTRIAN CIRCULATION AND PARKING FACILITIES

SELECTED PROJECTS (cont.)



AEGEK office building at Marousi, Greece.



Hellenic Ministry of Transport new building complex in Cholargos with multi-story underground parking.



Hellenic Parliament. Four-level underground parking building. Complete functional and geometric design of access system. Internal traffic circulation and parking design

Offices / Public Buildings (cont.)

- Folli-Follie building complex, Greece. Complete functional and geometric design of outdoor parking facilities for 300 cars.
- TOI & MOI building, Greece. Traffic system, access, internal circulation and parking system on two underground levels.
- Lion Hellas Building in Pireos Street, Greece. Access system, parking system, design of two underground parking levels.
- Lakis Gavalas Company Headquarters, Greece. Accessibility study. Functional design of internal circulation and parking system. Civil design of internal road links, parking areas, loading docks and aprons. Design of pavement marking and regulatory traffic signs. Design of surface water drainage and drainage network.
- Bank of Greece. Multistory Building with underground parking areas at Amerikis Street. Complete operational and geometric design study of access, internal circulation and parking system.
- Pisteos Bank Main Building on Pesmatzoglou & Stadiou Street, Greece. Signalization and signage of a single-lane access spiral ramp.
- New Eurobank office building, Tavros, Athens, Greece. Complete functional and geometric design of accesses, internal circulation and parking system for 280 cars.
- Ministry of Transport new building complex with underground parking station, Cholargos, Greece. Complete operational and geometric design study of access, internal circulation and parking system.
- Electricity Authority of Cyprus main administration building. Study of access, internal circulation and parking system in two underground levels (Tender).
- Hellenic Parliament. Four-floor underground parking station. Complete traffic system study.
- Public Power Corporation administration building at Girokomio area, Greece. Access system, internal circulation and parking.
- National Statistical Service of Greece Office building at Piraeus. Access system, internal circulation and parking system. (Tender Study)
- Karditsa prefecture building, Greece. Access system, internal circulation and parking system.
- Karela office and industrial installations complex. Complete operational and geometric design study of access, internal circulation, parking and drainage system. Traffic impact assessment study.

DESIGN OF MAJOR TRAFFIC GENERATORS : INTEGRATED ACCESSIBILITY, INTERNAL VEHICULAR & PEDESTRIAN CIRCULATION AND PARKING FACILITIES

SELECTED PROJECTS (cont.)



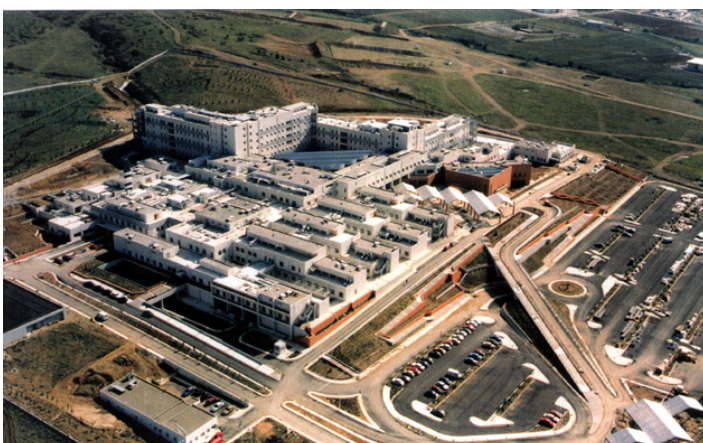
Alexandroupolis Hospital, Greece.



IASO pediatric clinic, Greece.



Ioannina University Hospital, Greece.



West Salonica Regional Hospital, Greece.

Health Care

- Agrinio Hospital, Greece. Access, internal circulation and parking system. Connection system with Antirrio – Ioannina National Road.
- West Salonica Regional Hospital, Greece. Functional planning of access system, internal traffic circulation and parking. Engineering design of internal road network, parking areas and drainage system. Heliport design.
- Volos Hospital new wing, Greece. Complete operational and geometric design study of access, internal circulation and parking system.
- Heraklion University Hospital, Greece. Complete operational and geometric design study of access, internal circulation and parking system.
- Ioannina University Hospital, Greece. Complete operational and geometric design study of access, internal circulation and parking system.
- Alexandroupolis Hospital, Greece. Complete operational and geometric design study of access, internal circulation and parking system.
- IASO pediatric clinic, Greece. Access system, internal circulation and parking system.
- Nursing home at Ioannina, Greece. Access, internal circulation and parking system.
- Agios Pavlos Hospital, Greece. Access system, internal circulation and parking system.
- West Attica Hospital, Greece. Access system, internal circulation and parking system.
- Venizeleio – Pananeio Hospital, Crete island, Greece. Environmental Impact Assessment study.
- Halkida Hospital, Greece. Environmental Impact Assessment study.

DESIGN OF MAJOR TRAFFIC GENERATORS : INTEGRATED ACCESSIBILITY, INTERNAL VEHICULAR & PEDESTRIAN CIRCULATION AND PARKING FACILITIES

SELECTED PROJECTS (cont.)



Peace & Friendship Athletic Center, Greece.
Access and Internal circulation system



Karaiskakis stadium, Greece.
Optimal access system. Review of the programmed traffic interventions in the area. Determination of an effective entry/exit system of the stadium. Determination and functional analysis of the stadium's internal circulation and parking system. Functional, preliminary and final design study of parking areas and proposals for traffic arrangements. Drainage and sewage study.



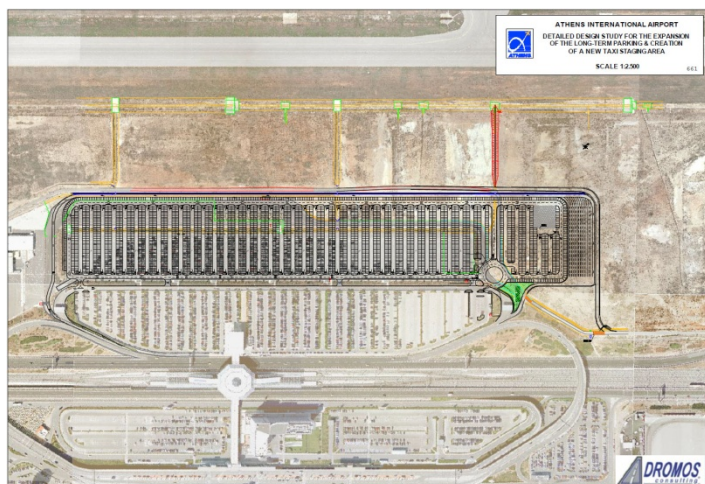
Larissa FC Football Arena development, Greece.
Accessibility study. Functional planning and geometric design of access system, internal circulation and parking

Sports Facilities

- Panionios FC Football Arena development, Greece. Accessibility study and functional design of internal circulation and parking system within the context of the Master-plan of the new facility.
- Larissa FC Football Arena development, Greece. Accessibility study. Functional and geometric design of road network connections, internal circulation and parking.
- Peace & Friendship Athletic Center, Greece. Access and internal circulation system
- Karaiskakis stadium, Greece. Optimal access system. Review of the programmed traffic interventions in the area. Determination of an effective entry/exit system of the stadium. Determination and functional analysis of the stadium's internal circulation and parking system. Functional, preliminary and final design study of parking areas and proposals for traffic arrangements. Drainage and sewage study.
- Post Olympic use of Tae Kwon Do Venue, Greece. Traffic impact study.
- Post Olympic use of Ag. Kosmas Venue, Greece. Traffic impact study.
- Post Olympic use of Markopoulo Venue, Greece. Traffic impact study.
- Dual rehabilitation of Votanikos and Alexandras Ave associated with the new Football Stadium of Panathinaikos FC, Greece. Traffic management, road design study and hydraulic study. Traffic impact study for Votanikos area. Preliminary traffic study for Alexandras avenue area.
- Post Olympic use of Galatsiou Venue, Greece. Traffic impact study.

DESIGN OF MAJOR TRAFFIC GENERATORS : INTEGRATED ACCESSIBILITY, INTERNAL VEHICULAR & PEDESTRIAN CIRCULATION AND PARKING FACILITIES

SELECTED PROJECTS (cont.)



Operational and geometric design for the expansion of New Athens International Airport long term parking, Greece.



Multi-level car parking, Athens, Greece

Parking buildings and terminal stations

- Three-floor underground parking building with parallel degrading of Moustoksidei Street under Protomagia Plaza, Greece (Tender).
- Multistory and underground vehicle parking station at I.Drosopoulou Street, Greece. Complete functional and geometric design study of access, internal circulation and parking system.
- Parking Building Station at Kallithea, Greece. Study of traffic system, access, internal circulation and parking system.
- Odessa multistory car park, Ukraine.
- Underground parking station at Irimi Square, Komotini, Greece. Traffic Design Study.
- Spata New International Airport, Greece. Expert services on behalf of Aerolimin SA concerning the airport's terrestrial access system and the traffic & parking system design.
- El. Venizelos International Airport, Greece. Cargo terminal operations. Access system, internal circulation and parking system.
- Hellinikon Western Airterminal. Complete operational and geometric design study of access, internal circulation and parking system.
- Operational and geometric design for the expansion of New Athens International Airport long term parking.
- Ioannina Airport New Terminal, Greece. Complete functional and geometric design of access, internal circulation and parking system for 300 cars, service vehicles, lay-bys, taxi station, public transport and bus terminals.
- Complete design and development study in phases of the Acharnes Transportation Centre, Greece. Basic road network design of Acharnes Municipality for accessing Acharnes Transportation Centre and connecting to the motorway network.
- Athens Central Railway Station, Greece. Complete access system design within the Inner Ring Road of Athens.
- Underground parking building at Platanos Square, Municipality of Kifissia, Athens, Greece. Complete operational and geometric design study of access, internal circulation, parking system and demand estimation study.
- Underground parking at Demokratias Square, Municipality of Papagos-Cholargos, Athens, Greece. Feasibility study for the implementation of a robotic parking system.

DESIGN OF MAJOR TRAFFIC GENERATORS : INTEGRATED ACCESSIBILITY, INTERNAL VEHICULAR & PEDESTRIAN CIRCULATION AND PARKING FACILITIES

SELECTED PROJECTS (cont.)



Phillip Morris New Industrial Unit at Aspropyrgos, Greece.

Industrial

- Phillip Morris new Industrial Unit at Aspropyrgos Attika, Greece. Traffic system, access, internal circulation and parking system, road design and drainage design.
- Mechanical Recycling and Conservation Factory at Liosia, Greece. Traffic Study and road design study.
- New multimodal freight – logistics centre in Thriasio Pedio, Greece. Design of access, internal circulation and parking system for a fleet of approximately 1000 trucks and 800 cars per day. Design of loading docks, aprons and rail – truck interloading, along with modest container terminal facility (tender).
- Kalamata Industrial Park, Greece. Complete operational and geometric design study of access, internal circulation and parking system.
- New cement factory in Montenegro. Leveling, internal transportation system for heavy vehicles, storm-water drainage, collection and treatment, sewage network and sewage treatment, road connection to the national road along with grade separated interchange.
- Thisvi industrial park in Greece. Hydrological study, flood protection design, landscape design, access and internal circulation system design and drainage design.
- ELVAL aluminium industry. Hydrological study, flood protection design, landscape design, access and internal circulation system design and drainage design.
- ILLICHIVSK Port at Odessa, Ukraine. New Cold Stores civil design.
- ELVIEMEK SA Industrial Areas and Business Parks. Commercial Centre – Logistics Park at Oinofita, Greece.
- Attika Industrial Area B in Schisto, Greece. Feasibility study for the establishment of Area B and preliminary study of three foundries.

Education / Culture

- Athens National Technical University at Zografou, Greece. Internal circulation and parking system.
- ALBA conference center – open MBA University, Greece. Complete operational and geometric design study of access, internal circulation and parking system.
- Trikala music high school – Senior high school, Greece. Access system, internal circulation and parking system.
- The American College of Greece - Pierce College. Rearrangement of open-air parking. Checking of the underground parking building study.
- Athens Music Hall, Greece. Phase B. Transportation – Traffic Study. (Tender Study)
- “Foundation of Hellenic World”. “Hellenic Cosmos” Cultural Center, Greece. Complete functional and geometric design of access, internal circulation and parking system for approximately 1000 cars, internal fixed track system and visitors’ bus terminal.
- Odessa downtown historical building complex, Ukraine. Parking garage design.

DESIGN OF MAJOR TRAFFIC GENERATORS : INTEGRATED ACCESSIBILITY, INTERNAL VEHICULAR & PEDESTRIAN CIRCULATION AND PARKING FACILITIES

SELECTED PROJECTS (cont.)



Hilton Rhodes island hotel, Greece.



Resort – hotel unit in Samos island, Greece.



Marina, hotel and resort development at the Gulf of Scorponeria, Greece.

Hotels / Resort complexes

- New five-star resort – hotel unit with 726 bed capacity in Samos island, Greece.
- Navarino Dunes Resort, Costa Navarino, Greece. New five-star 1500 bed conference centre, golf resort and spa.
- Casino and Club Hotel Loutraki S.A., Greece. Access system and internal circulation. Underground parking station study, 2000 spaces.
- Mont Parnes casino teleferique station, Greece. Parking facilities and access system.
- Hilton Rhodes island Hotel, Greece.
- Marina, hotel and resort development at the Gulf of Scorponeria, Greece.
- Oxia “Art Island”, Greece.
- Astir Palace, Greece. Traffic Circulation Consultant.



Astir Palace, Greece. Traffic Circulation Consultant.

ENVIRONMENTAL IMPACT ASSESSMENT STUDIES

SELECTED PROJECTS



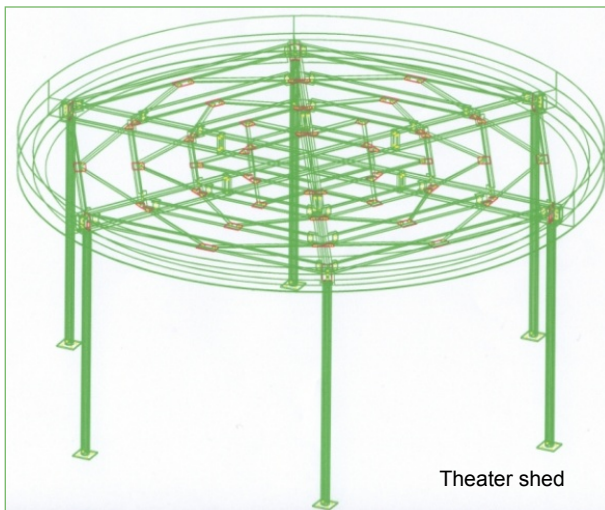
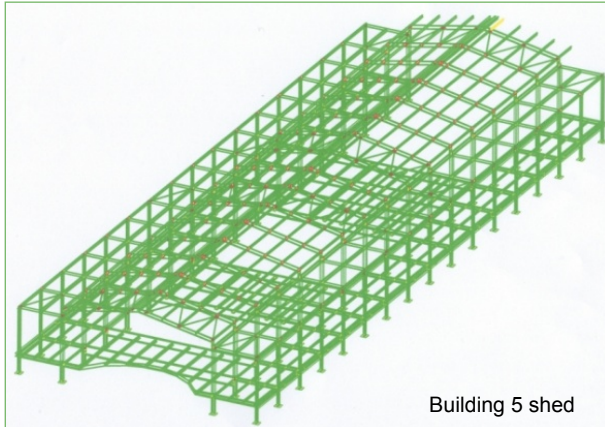
Korinthos – Tripolis – Kalamata Motorway, Greece.

Complete geometric design of 26 km long motorway segment, including six interchanges. Road drainage design. Environmental Impact Assessment.

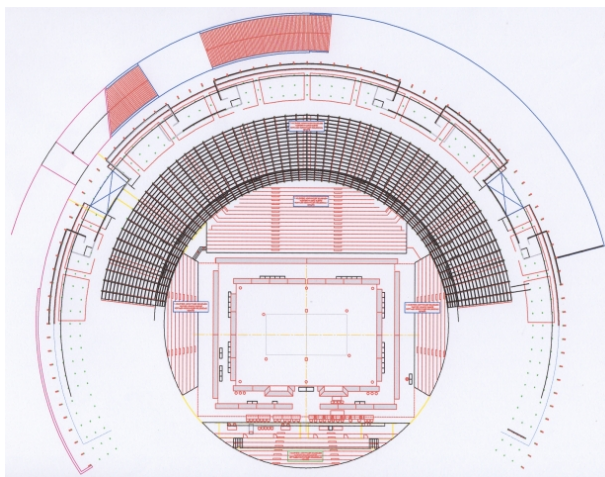
- Major Transportation Projects of Attica, Greece. Preparation of specifications for environmental impact studies
- Korinthos - Kalamata motorway, Greece. Tripoli - Megalopoli 26 km section environmental impact assessment study
- Transport analysis and traffic forecasting for the Environmental Impact Assessment of the new port of Rhodes island, Greece.
- Environmental impact study of Naxos airport, Greece.
- Environmental impact study of Skyros airport , Greece.
- Kifissos corridor, Greece. Environmental impact and traffic analysis
- Ardanio to Soufli 40 km section of Egnatia Odos vertical axis K80 to the Bulgarian borders. Environmental impact assessment prestudy
- Environmental Impact Assessment study for the upgrade and rehabilitation of Peace and Friendship indoor Stadium into Olympic Volley Ball Venue, Greece.
- Egnatia Odos vertical axis 40, Panagia interchange to Kalambaka interchange, Greece. Environmental pre-licensing report for proposed alternative
- Salamina crossing toll motorway, Greece. Environmental Impact Study, monitoring and inspection .
- Environmental Impact Assessment prestudy (project pre-licensing) for the Central Greece Motorway from Egnatia Odos Panagia Interchange (west Sector) to Volos Port along with connecting branch to Lamia, Greece.
- New Athens – Thessaloniki high speed railway line. Eastern Lamia bypass, Greece. Preliminary design. Environmental Pre-licensing.
- Environmental Impact Assessment study for the new Hellenic World Center complex and exhibition center in Athens, Greece.
- Environmental Impact Assessment Prestudy (project pre-licensing) for the 120 km Korinthos to Patras Motorway, Greece.
- Egnatia Odos S.A. call-up contract for the elaboration of Environmental Impact Assessment studies, Greece.
- Environmental Impact Assessment study for the upgrading of the main railway corridor through Athens conurbation to a 4 track grade separated corridor.
- Environmental Impact Assessment study for the expansion, upgrade and rehabilitation of existing central Athens railway depot for exclusive passenger rail fleet stabling and maintenance, Greece.
- Environmental Impact Assessment prestudy and study for intersection of Spili bypass road with existing provincial road, Greece.
- Environmental Impact Assessment study for the introduction of a light tramway system in the Urban Public Transport Network of the Municipality of Kalamata, Greece.
- Review and update of Environmental Impact Assessment study for Rhodos city ring road, section Kalithea interchange to Kritika, Greece.
- Air pollution levels forecasting of Athens Metropolitan Area for the year 2004, Greece.
- City of Kavala, Greece. 8.5 km peripheral highway, environmental impact assessment study
- Imittos Western Peripheral toll motorway, Greece. Environmental Impact Study, monitoring and inspection
- Imittos Tunnel and access links , Greece. Environmental Impact Study, monitoring and inspection
- Elefsina - Stavros - Spata toll motorway , Greece. Environmental Impact Study, monitoring and inspection
- Environmental impact study of the new railway line Thessaloniki - Amfipoli - Toxotes (Xanthi area), Greece
- Transport analysis and traffic parameters of environmental impact study of the extension program of Athens Metro network, Greece.
- Environmental impact study of Agrinio by-pass 35 km long motorway section, part of national Road No 5, Greece
- Environmental impact study of Rodos city orbital route and airport to city new link, Greece
- Urban structure impact study of the Athens Metro Network under construction, Greece
- Kifisos Avenue IKEA Shopping Center, Greece. Environmental impact assessment study.
- Environmental Impact Assessment prestudy and study for the new Chalkis city hospital construction and operation, Greece.
- Environmental Impact Assessment study for Faliro bay rehabilitation and development of Olympic Venues, Greece.

STRUCTURAL DESIGN OF BUILDINGS AND TRANSPORT INFRASTRUCTURE PROJECTS

SELECTED PROJECTS

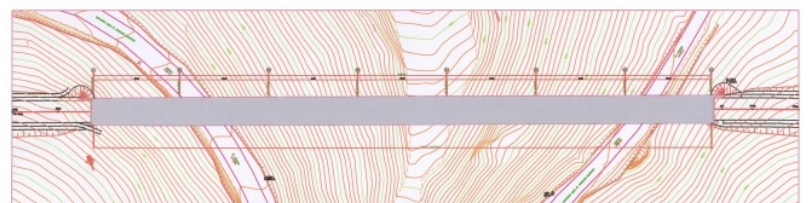
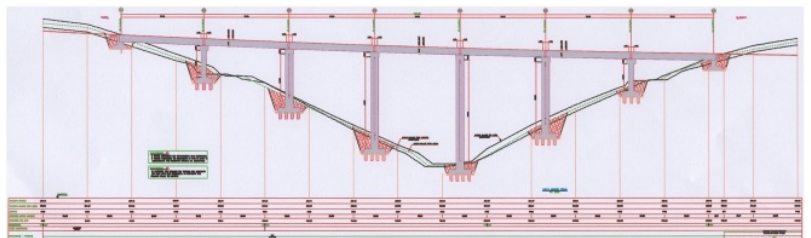


Protection Sheds of Ancient Building and Tombs in the context of Pelea Chora Archeological Area Complete Rehabilitation Study, Greece.



Athens 2004 Summer Olympic Games. Beach Volley Stadium at the Faliro Bay area.
A composite structure of Steel and Concrete.
Structural Design of Steel Segment.

- Integrated Design, Development Study and supporting studies / surveys for the Construction of the Beach Volley Olympic Installations and the rehabilitation of the Faliro Bay Area, Greece.
 - Integrated Structural Studies of buildings B120, B130, B140, B230 and stadium A250.
- Complete rehabilitation study of the Pelea Chora Archeological Area, Greece.
 - Integrated Structural Studies of Ancient Buildings and Tombs Protection Sheds (12 sheds), Visitors' Reception Buildings (10 buildings) and outdoor structures (pathway shelters).
 - Comprehensive structural analysis of bearing shell
 - Small-Pile Foundation of Sheds to avoid antiquity damage.
- Final Design Study of the Amfissa - Lidoriki National Road, Greece.
 - Section Agia Efthimia - Lidoriki. Preliminary Study of a 270 m long Viaduct.
- Egnatia Odos Motorway, Greece. Technical Consultant for the design of the Grevena Interchange and connecting section.
- Design - Build - Finance and Operate of the Elefsina - Stavros - Spata Airport Motorway and of the Imittos Western Peripheral Avenue, Greece.
 - Preliminary Design of the Imittos Western Peripheral Avenue Bridges, C&Cs, Tunnels, Retaining Walls.
 - Preliminary Design of Technical Structures at Kifissias Avenue - Spirou Loui Road, Agiou Konstantinou Road: Covering Slabs, Retaining Walls.
 - Preliminary Design of Technical Structures: Bridges, C&Cs, Pile Walls.
- Final Design Study of the Broad Agrinion Bypass, Greece. Section B: Rigani Toll Plaza Design.
- Ring Road for the City of Rhodes – Section from Kallithea Interchange up to Seferi street, Greece. Prestudy and detailed structural study.
- City of Rhodes, Greece. Urban expressway, local network reinstatement and intersections design. Structural study of an 80 meters dual carriageway bridge and 4 flyovers.



Design of a 270 m long Viaduct of the Amfissa - Lidoriki National Road, Greece.

SURVEYING AND MAPPING, AERIAL PHOTOGRAPHY AND PHOTOGRAMMETRY

SELECTED PROJECTS



Aerial Photograph of the Sperchios River Mouth, Greece

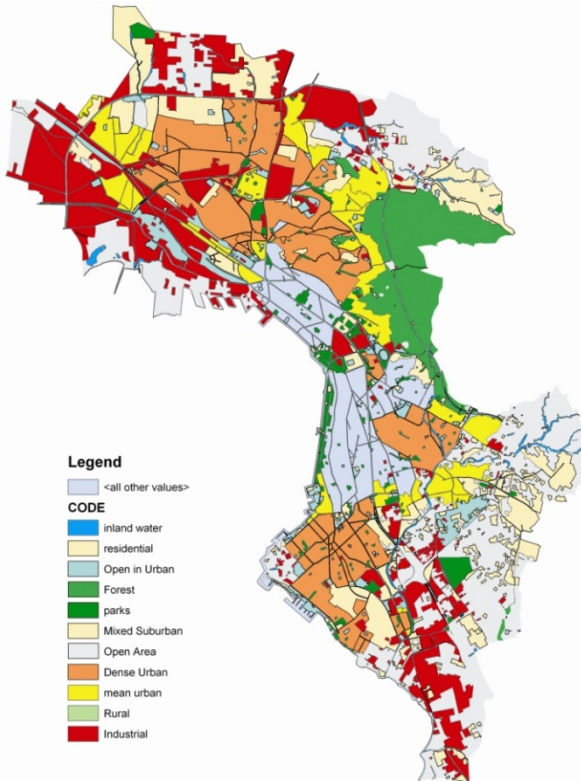


Athens center aerial photography, Greece

- Aerial photography of Greek territory at a scale of 1:20.000 for the development of Greek soil map.
- Aerial photography of Sebha region in Libya (scales 1 : 6000 and 1 : 5000)
- Aerial photography of Darnah region in Generaica, Libya (scales 1 : 6000 and 1 : 15000)
- Photogrammetric mapping of Sebha region in Libya (scales 1 : 1000 and 1 : 5000)
- Horizontal and Vertical ground control and Triangulation for mapping of Bengazi area in Libya (scale 1 : 1000)
- Aerial photo-mapping of Aqaba, ground control and mapping at scales 1:1000 and 1:5000
- Horizontal and Vertical ground control and aerial Triangulation for mapping of Merj and Baydah area in Libya (scale 1 : 1000)
- Aerial photo-mapping of Thessaloniki Valley, Greece (scale 1 : 5000).
- Master Plan of the World Black Arts Festival, aerial photo-mapping, in Lagos-Nigeria.
- Photogrammetric Mapping at scale 1:1.000 of 45 km of Egnatia motorway, Greece
- Aerial photography and Photogrammetric mapping at scale 1:500 of New Rodos Airport linkage and City of Rodos ring road, Greece.
- Aerial photography at scale 1:3.500 and mapping at scale 1:500 of Alumina Plant site and access roads at Thisvi, Viotia, Greece
- Aerial photography at scale 1:5.000 and Photogrammetric mapping at scale 1:100 of Komos-Kozani area of Public Power Corporation, Greece.
- Colour aerial photography of natural gas pipeline from north Hellenic border to Athens at a length of 650 km and scale 1:6.000, Greece.
- Aerial photography of Greece at a scale of 1:20.000 in the framework of the Greek soil mapping project – 132.000 SQ.KM
- Cadastral mapping of Athens area at scale 1:1.000 (14 Municipalities), Greece.
- Preliminary cadastral mapping at scales 1:1000, 1:2000 and 1:5000 – Korinthos and Argolis prefectures, Greece.
- Aerial photography at scale 1:40.000 and preparation of orthophotos in the framework of Integrated Agricultural Project on behalf of the Ministry of Agriculture – 20.000 SQ.KM, Greece.
- Aerial photography at scale 1:40.000 and orthophoto-mapping in the framework of Olive and Vineyard Register – Greek Ministry of Agriculture 18.000 SQ.KM
- Cadastral surveying, photogrammetric mapping, preparation of orthophotos and development of land information systems for five municipal areas in the framework of the Hellenic Cadastre.
- High altitude aerial photography for the estimation of the number of olive trees in Greece, in the framework of OLISTAT project – EU/DG VI
- Aerial photography, photogrammetric mapping, cadastral surveys and preparation of colour orthophotos in the framework of various road design projects on behalf of the Ministry of Physical Planning and Public Works, Greece.
- Aerial photography at scale 1:1.200 of Cyclades islands, Greece.
- Colour aerial photography at scale 1:8.000 of Greater Athens Area, Greece.

REMOTE SENSING AND GEOGRAPHICAL INFORMATION SYSTEMS (GIS) APPLICATIONS

SELECTED PROJECTS



Thessaloniki greater area land use cluster database, Greece



Athens Greater Area – Optimization of LMDS antenna's locations, Greece

- Development of the National Environmental Information Network, Greece.
- GIS Data Base development for Astypalaia, Nisyros, Kalymnos, Gyalii, Kos and Symi islands Master Plan, Greece.
- GIS applications and Data Base development for Public Works Management and Monitoring System, Greece.
- Technical assistance to the Ministry of Environment, Physical Planning and Public Works for the Development of an automated Mapping System within the frame of MOP, Greece.
- Development of a Remote Data Transmission System for water quality measurements in Evros, Nestos, Strymon and Axios rivers, Greece. Data integration within the National Environmental Information Network
- GIS Data Base development for Troizinia area Master Plan, Greece.
- GIS Data Base development for land use improvement of interlocal road connections in Attica region, Greece.
- Creation and updates of digital topographical city plans at a scale of 1:1.000, for digitization and management of the telecommunications network in the metropolitan area of Thessaloniki, Greece.
- Road Network Data Base Creation, Greece. Greek Ministry of Environment Planning and Public Works / Directorate of Road Construction Work Studies
- Development of a navigation system for people with vision problems – Research Project SMART EYES
- Creation of a countrywide Road Network Data Base (National, Provincial and Intercommunal roads) for Greece
- Creation of digital chartographic basemaps, Digital Terrain Models (DTM), digital orthophotomaps and land-use maps for the needs of studies for fixed wireless telephony networks (LMDS) – Greater Athens Metropolitan Area – Thessaloniki Metropolitan Area – City of Heraklion, Greece.
- Creation of digital 3-D chartographic basemaps, Digital Elevation Models (DEM), orthophotomaps and land-use maps for the needs of studies for 3G mobile telephony networks – Greater Athens Metropolitan Area – Thessaloniki Metropolitan Area, Greece.
- Compilation of digital geographic data for mobile telephony networks design
- Development of an Integrated Geographical Information System for management urban planning data, digital management of building/construction permits, management of technical and social infrastructures and fleet tracking - Municipality of Voula, Greece.
- Development of water users register in the fields of jurisdiction of the ministry of development and in tourism
- Consulting for the design and implementation of an operational GIS prototype for use within the Management Information System of Hellenic Railways Organisation, Greece.
- Production of digital basemaps and editing in GIS environment for Hellenic Railways Organisation, Greece.
- Photogrammetric mapping (including aerial photography) for the GIS and the GSM-R (wireless communication system for railway) of Hellenic Railways Organisation, Greece.
- Geographic Data Base development for the management of the business register of the prefecture of Dodecanese, Greece
- Production of digital orthorectified and georeferenced images for the GIS requirements of Hellenic Railways Organisation, Greece.

INTERNATIONAL ACTIVITY

SELECTED PROJECTS



Greece 2000 - 2006. Setting Priorities for Transport Infrastructure in view of the 3rd CSF. Consultancy to the European Commission. Land, sea and air transport networks and major nodal cities transport infrastructure.

- Vilonet EEC financed research project on new technology traffic management schemes on Athens coastal highway (Poseidonos Avenue) and the access system of Hellinikon Airport
 - Development of a low cost dual carriageway of Athens-Patras and Athens-Salonica motorways sections not included in the current upgrading plans - E.C./DG VII
 - Prior appraisal of Operational Programmes in Greece (Transport) Commission of the European Communities, DG XVI, LRDP, MTA Scheme
 - Setting priorities for Transport Infrastructure for the 3rd C.S.F. program 2000-2006, DG XVI
 - Multi-story commercial center with car parking underground station detailed design in Odessa, Ukraine .
 - Brega, New Town, Libya, Transport Network Planning
 - Aerial photography and mapping of Sebha Region, Libya (scales 1 : 1.000 and 1: 5.000)
 - Establishment of horizontal ground control network, photo control for photogrammetric mapping, Benghazi Region, Libya (scale 1:1000)
 - Cadastral mapping of Al-Jawf area, Saudi Arabia
- Aerial photography and mapping at scales 1:1.000 and 1:5.000 – Darnah Region Libya
 - Land surveys and Implementation of World Arts Festival – Lagos Nigeria
 - Improvement and beautification of urban streets in the areas of Khobar, Damam, Hofuf, Mubaraz, Buraydah Saudi Arabia. Mapping at scale 1:500 for 600 KM of urban streets
 - Eastern Region Corniche Project - Saudi Arabia. Mapping at scale 1:2.000 and bathymetry along a 70 km coastal zone in the Gulf area
 - Parks recreation project – Hofuf Saudi Arabia – High precision topographical mapping at scale 1:200.
 - East Riyadh (Saudi Arabia) Low Income Housing Project - Mapping at scale 1 : 500
 - Republic of Montenegro.Ministry of Maritime Affairs and Transportation. State Roads Directorate. Feasibility Study for a Road Bypass in Bijelo – Polje.
 - City of L'viv Sykhiv district, Ukraine. Transport planning system
 - Al Madina A' Zarqa – Blue City development project. Civil and internal road network design for the development of a 250.000 inhabitants new city at the coast of Arabic Gulf, 80 km north of Muscat, Sultanate of Oman.
 - Corridor X, Section : Grabovnica – Grdelica, Serbia. Complete motorway design.
 - Civil design for a New Cement Factory in Plevljie, Montenegro.
 - Office building in Oslo, Norway. Access system, internal circulation and parking system study. (Competition)
 - Expert assessment of the partnership agreements and operational programmes in the field of transport, 2014-2020 programming period of the European Structural and Investments Funds :
 - ✓ Assessment of the Transport sector strategy – Midterm Plan of Transport Infrastructure Development with a Long-term Outlook (time horizon 2014 – 2020 and beyond (2040) in Czech Republic.
 - ✓ Assessment of the partnership agreement for transport 2014-2020 in Greece
 - ✓ Assessment of transport development guidelines 2014-2020 in Latvia